

Project GREEN: Friends of Pittman Wash



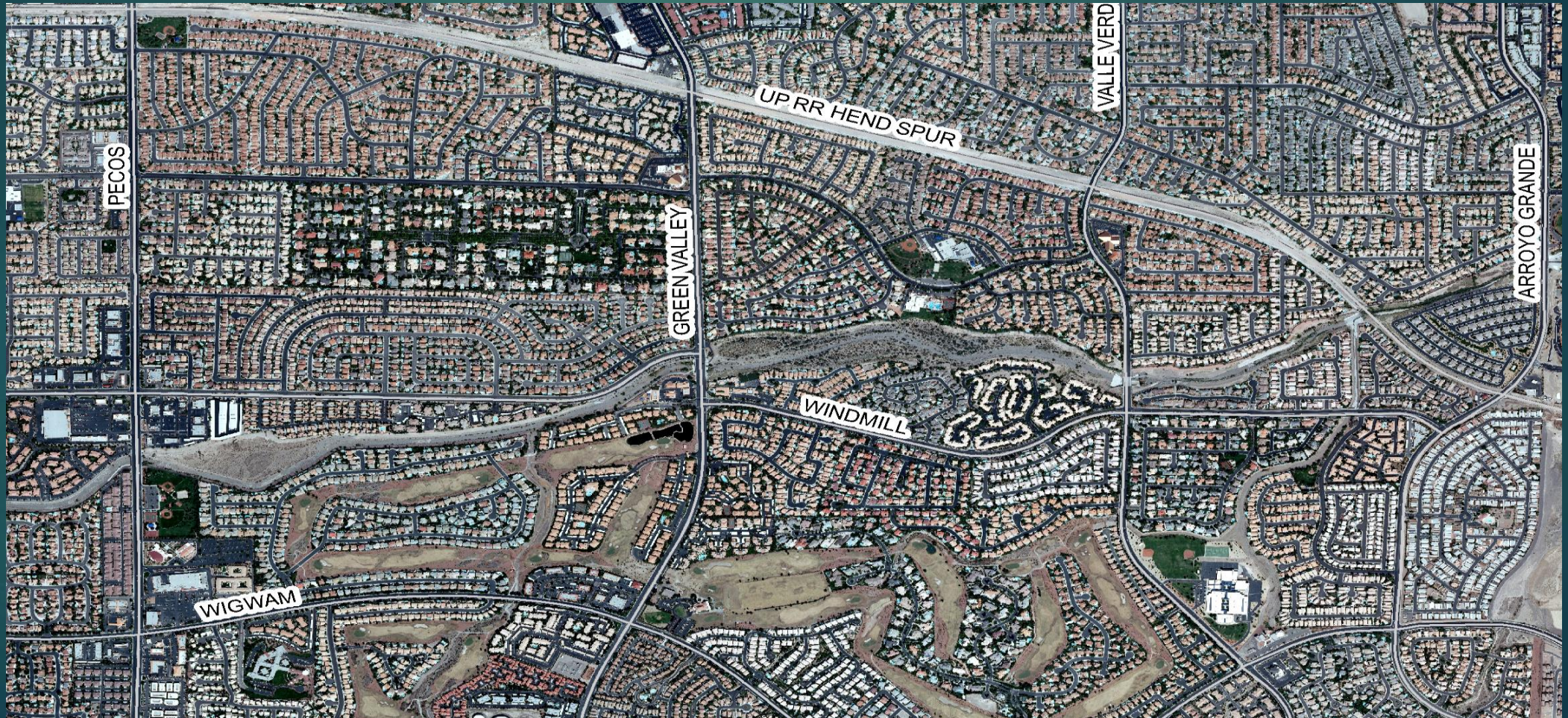
A brief History of the public outreach and volunteerism

October 2020

Our mission is to preserve & protect the wildlife & wildlife habitat of Pittman Wash, the last remaining desert riparian ecosystem in the Green Valley area of Henderson, NV. The word, “GREEN,” in our name is an acronym for Green Valley Ecology, Environment, & Nature.



Project GREEN: Friends of Pittman Wash has focused its efforts on a 3-mile reach of Pittman Wash between Pecos Rd. on the west & Arroyo Grande Blvd. on the east.



Pittman Wash is a vegetated riparian ecosystem. Vegetation includes catclaw acacia, desert willow, mesquite, cottonwood, creosote, white bursage, quailbush, saltbrush, desert broom, cheese bush, brittlebush, sacred datura, pima rhatany, silver cholla, & pencil cholla.



BENEFITS TO THE COMMUNITY

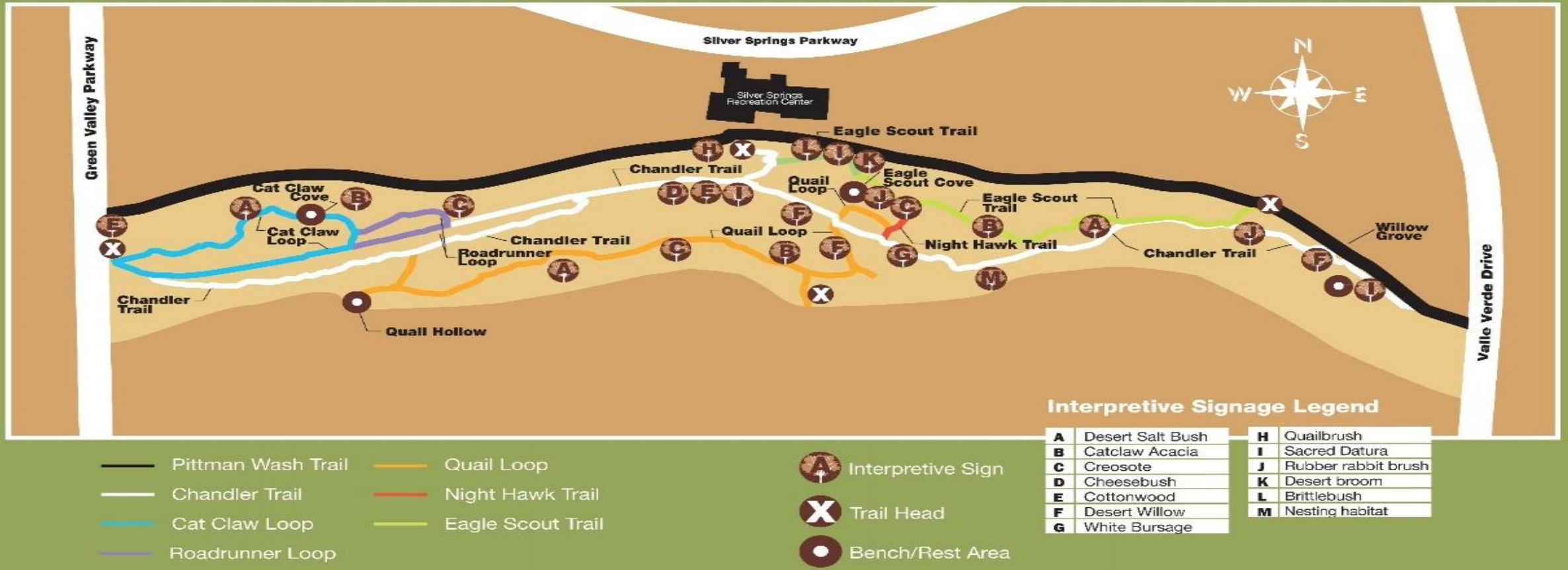
- ▶ Preserves & protects wildlife & wildlife habitat
- ▶ Preserves scenic beauty, rural character, & natural resources in residents' backyards
- ▶ Provides opportunities for passive recreation in a natural habitat
- ▶ Educates the community about the value of this desert riparian corridor
- ▶ Provides improved storm water quality
- ▶ Retards storm water run-off & stabilizes stream bed & banks by promoting vegetation
- ▶ Organizes opportunities for volunteer involvement

BENEFITS TO THE COMMUNITY

- ▶ Enhances sense of community through unique educational, recreational, & volunteer opportunities
- ▶ Reduces vandalism
- ▶ Enhances quality of life
- ▶ Improves real estate values
- ▶ Promotes responsible use of land & water resources
- ▶ Assures a sustainable future for people, plants, & animals

Public Access to Pittman Wash

Project GREEN: Friends of Pittman Wash Trail Map



Public Access to Pittman Wash

Project GREEN: Friends of Pittman Wash Trail/Legacy Learning Loop Map



To enhance community appreciation, enjoyment, & education about natural history, geology, flora, & fauna, Project GREEN creates, installs, & maintains dozens of directional signs & interpretive signs along our trails & kiosks at our trailheads.



Pittman Wash has a permanent flow of water, although much of the flow is through sands & gravels.



Project GREEN's monthly community outreach events include 3 major volunteer days per year. Tasks include removing tamarisk (salt cedar), reintroducing native plant species, building & maintaining trails, creating & installing directional & interpretive signs, & removing litter.



Project GREEN's monthly community outreach events also include interpretative walks that focus on aquatic habitat, birds, botany, geology, hydrology, mindfulness, moonlight, sunset, photography, & wildflowers.



Project GREEN: Friends of Pittman Wash works to preserve & protect wildlife & wildlife habitat in Pittman Wash – an invaluable natural treasure.

