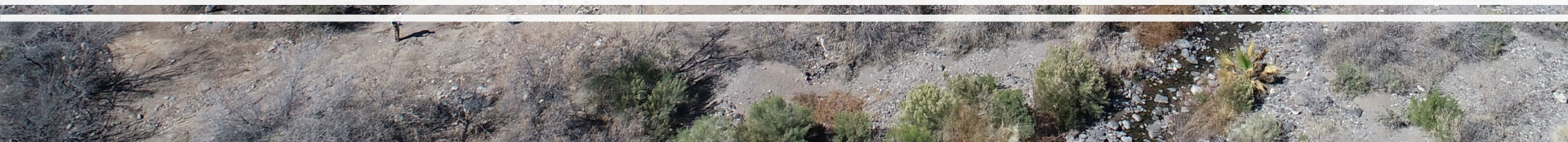




The Pittman Wash, a jewel in the City





# The Maintenance Challenges

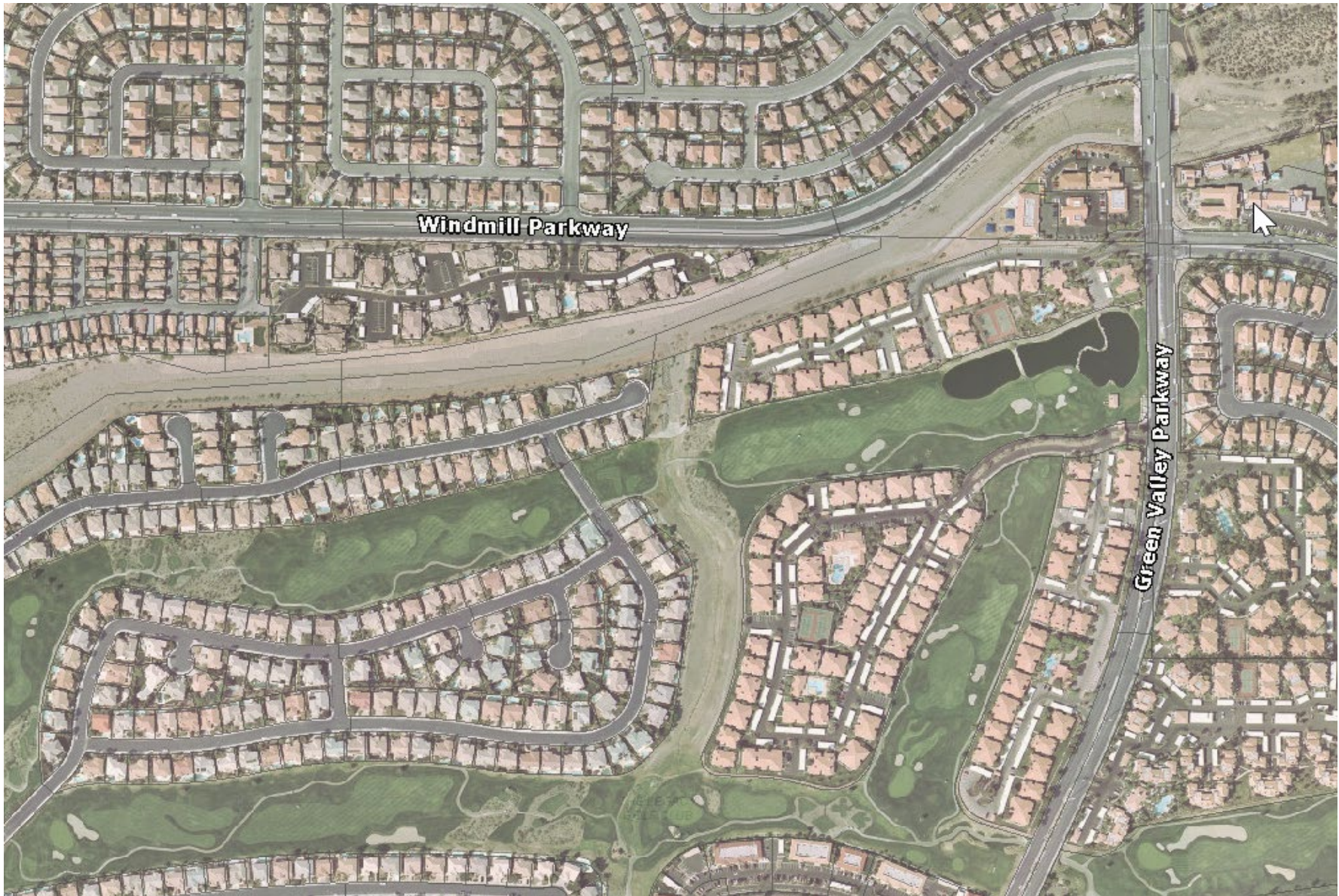
- **Drainage Channel**
- **Sewer Access and Maintenance**
- **Maintaining a sense of nature in the city**
- **Fire hazard**
- **Vector control (mosquitos and rats)**
- **Walking trail, slippery at road crossings**
- **Social trails in the wash**
- **Vegetation and Damage caused by vegetation**
- **Invasive/nonnative species**

## The wash in 1994, minimal development, minimal vegetation



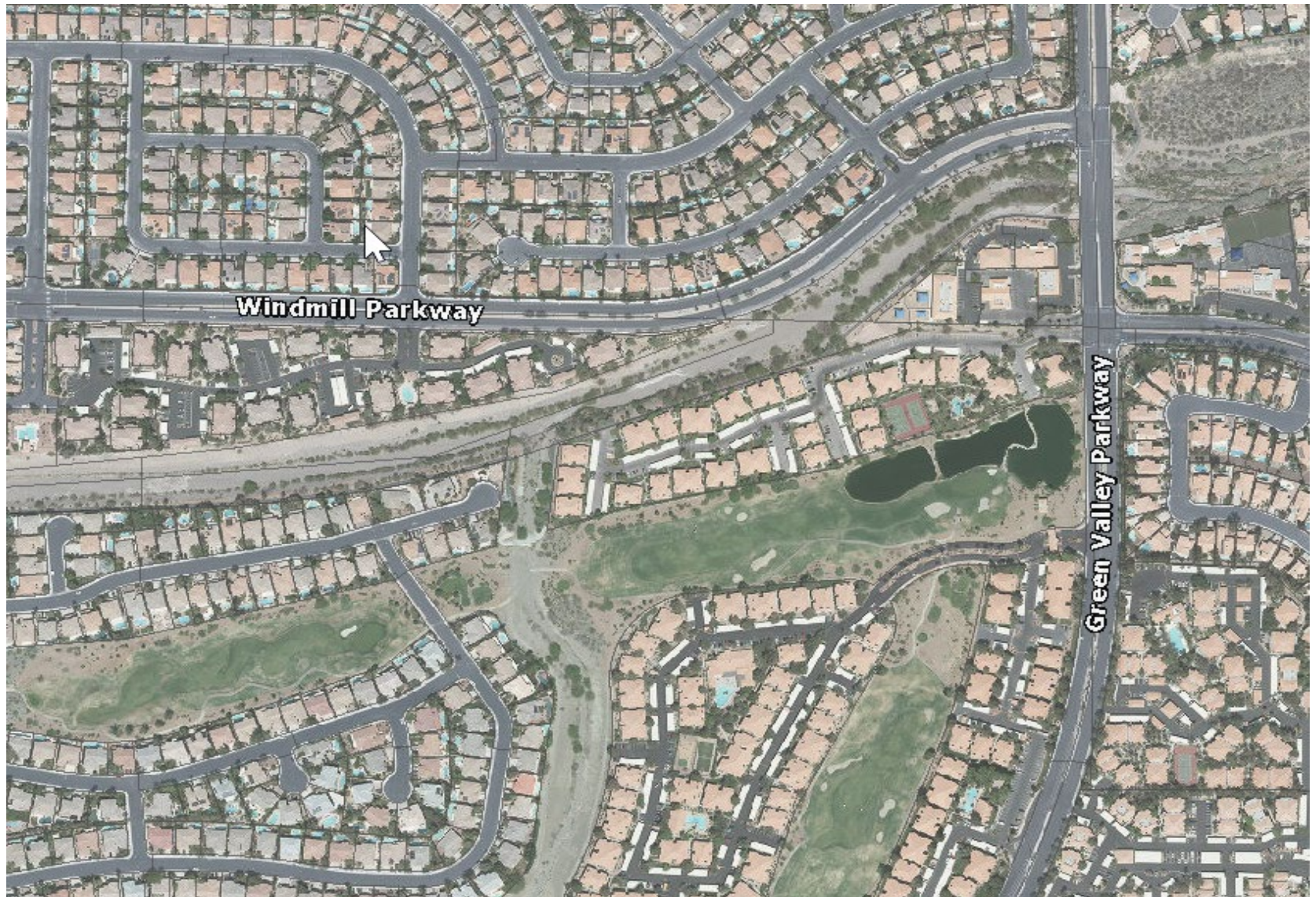


**The wash post development, gabions constructed, minimal vegetation in 2004**





**Gabions lined area in 2018, volunteer trees are taking over, flood control is compromised**



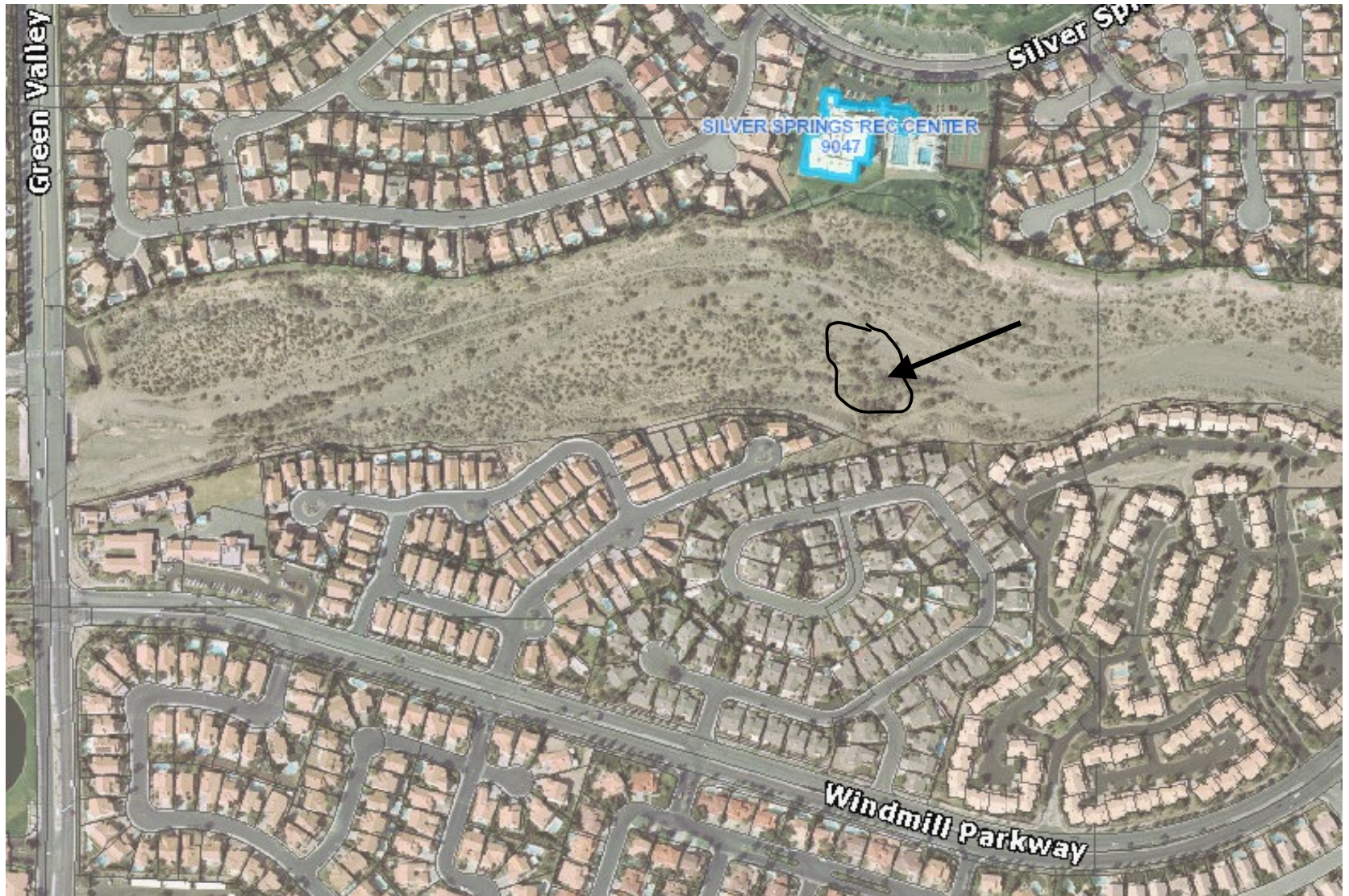


## Ocotillo Pointe in 1994, no mesquite trees, minimal vegetation





**Ocotillo Pointe in 2018, mesquite trees and roots completely blocked the 36" drain**



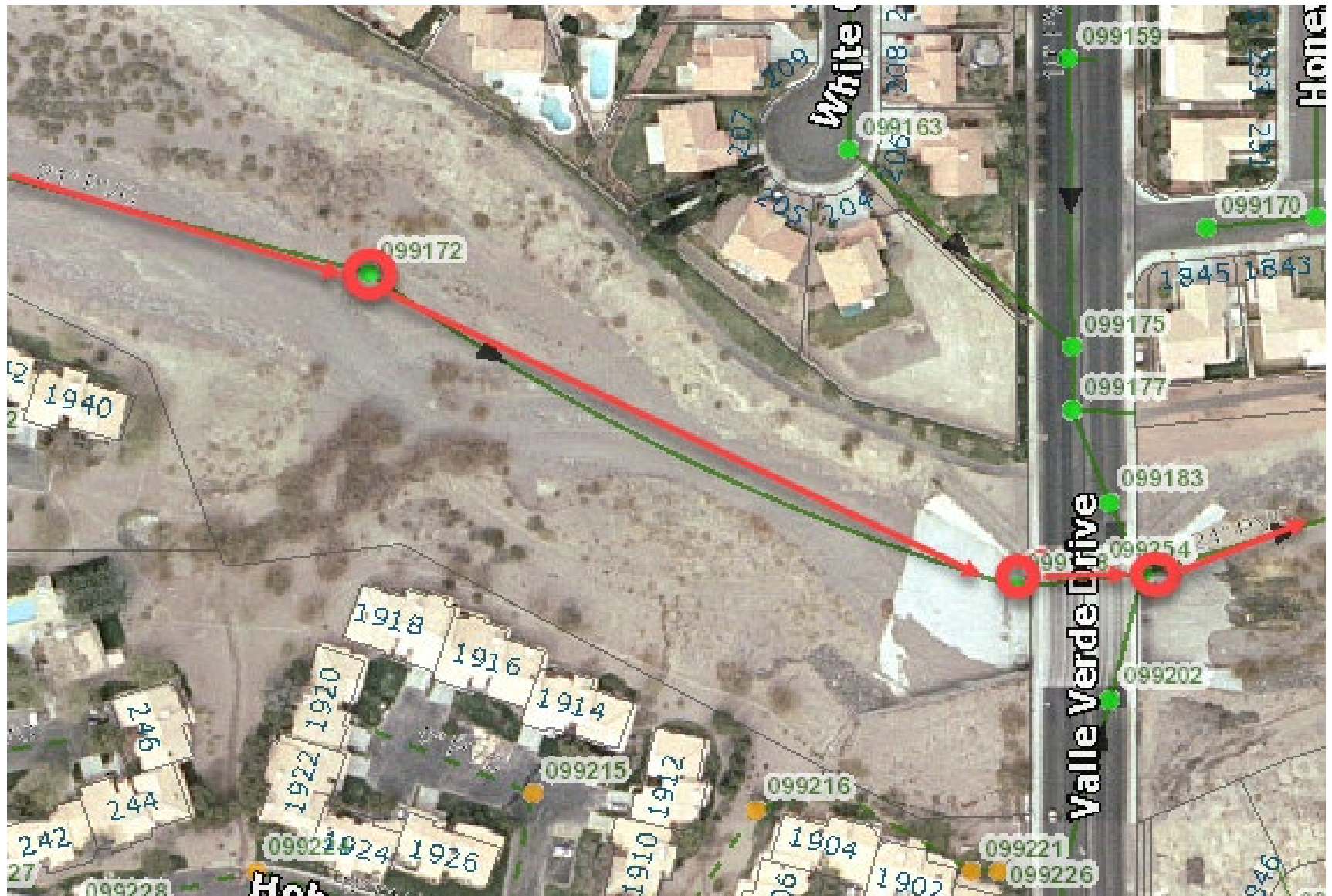


# Ocotillo Pointe in 2018





## Sewer Access in 2002, minimal vegetation, easy access with equipment









Vactor Truck, used for sewer maintenance. 60,000 pounds loaded weight, 28' long





# Near La Mancha Estates, 989 Tons of 24" rip rap placed due to bank erosion





## **2013 Fire near Silver Springs Rec Center, overgrown vegetation becomes hazardous fuel**





**2013 Fire near Silver Springs, never go in the wash during a fire, this is terribly dangerous, brush fires can spread at 20 mph**





Whitney Mesa wild fire, overgrowth caused a major fire that jumped Sunset Road.







**June 2018 Mosquitos, larva in the Wash has tested positive for both St. Louis Encephalitis and West Nile Diseases. In 2019 Pittman Wash at Pecos Legacy park has WND**



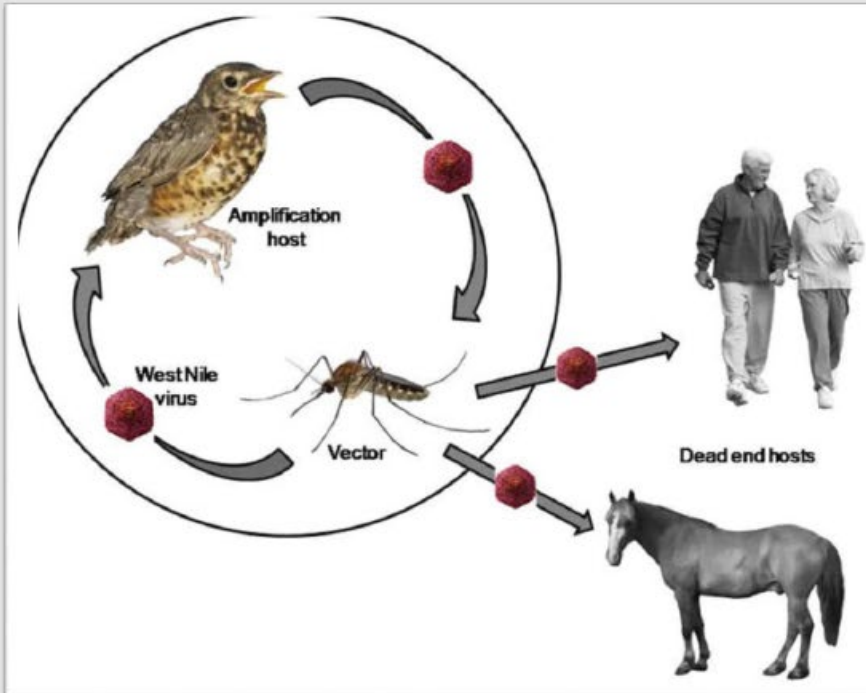
36.04346396, -115.08330531

SLP

June 08 2018, 11:57:02 am



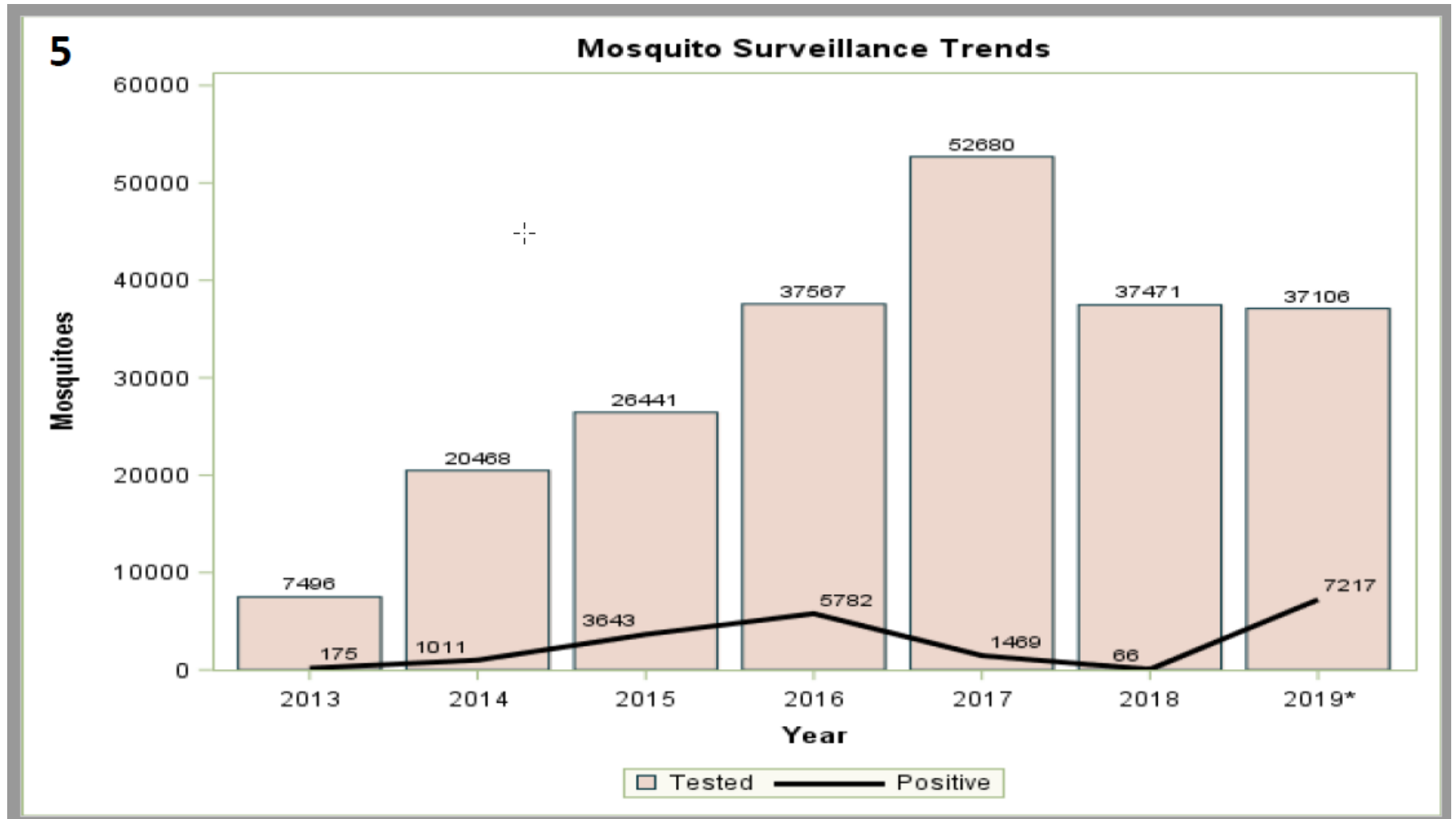
4



**Disease of Birds: Finches, Sparrows and Robins are amplifying hosts**



## Sampling in Clark County as of August 2019



Slide 4-5 courtesy of CCHD





**Cluster of Mexican fan palms and red tamarisk, both should be Removed. Tamarisk is a fire hazard and Fan palm is a rat haven, this area is difficult to access and presents a major challenge**





**Mexican fan palms,  
red tamarisk  
and excessively dense  
vegetation, water  
feature is neglected,  
stagnant water.**

**Manhole in lower left  
corner**



Questions?

