

June 17, 2020

# Upper Pittman Wash Stakeholder Group Meeting

---

# Review of Current Flood Control Maintenance Activity

---



UPRR Trestle to Arroyo Grande

# UPRR Trestle to Arroyo Grande

(looking north-westerly from Arroyo Grande)

**April 20, 2020**



**June 17, 2020**



# UPRR Trestle to Arroyo Grande

(looking south-easterly)

**April 20, 2020**



**June 16, 2020**



Select a View:

Public Works

Current Imagery

Quick Search (address, parcel, intersection)

Search Here

Map Tips

CityView

+

-

Public Works TOC

Tools

Find

Switch Maps

Legend

The map shows a dense residential area with a grid of streets. A red circle highlights the intersection of Pebble Road and Eastern Avenue. Other labeled streets include Jessup Road, Wigwam Parkway, and Pecos Road. The map is part of a web application with various search and navigation tools.

Pebble to Wigwam



Pittman Wash at Pebble - cleanup



Pittman Wash at Pebble - cleanup

# Henderson, Nevada

A PLACE TO CALL HOME

## Quick Links

EMPLOYMENT

VOLUNTEER CONNECTION

EVENTS

BUY TICKETS

CITY DEPARTMENTS

CONTACT HENDERSON

ONLINE REGISTRATION

CUSTOMER SURVEY

### City of Henderson

Incorporated in 1953, Henderson has developed into a community with premier services and amenities.

# Contact Henderson

Download the app on your smart phone or use the portal on the webpage at

[www.cityofhenderson.com](http://www.cityofhenderson.com)



# City of Henderson, NV

Productivity

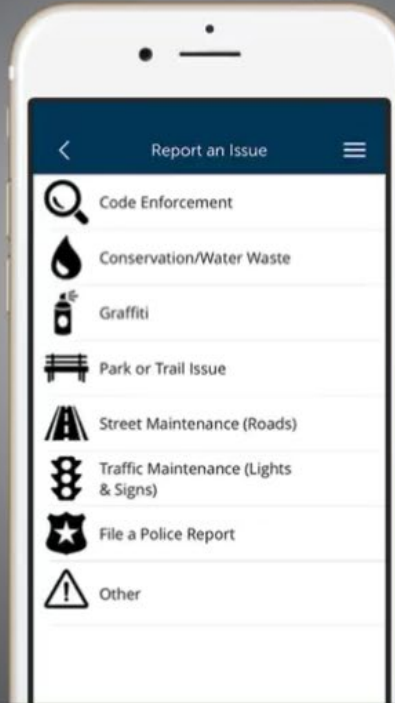
★★★★☆ 5



Your City In  
The Palm Of Your Hand



The App That Gives  
You The Power  
To Be The Change



Everything You Need  
To Stay Connected  
To Your City



**\*NEW\***

# Henderson App

Henderson City Hall is currently closed to visitors. [Hide](#)  
For information and updates on COVID-19, call 702-267-INFO (4636) or click [here](#).

- HOME - PUBLIC WORKS
- ABOUT - PUBLIC WORKS
- MEET THE DIRECTOR
- DIVISIONS ☒
- BIKE HENDERSON
- CAPITAL IMPROVEMENT PLAN
- FLOOD CONTROL ☒
- FORMS
- FUEL REVENUE INDEXING INFORMATION
- GIS
- NATURALLY OCCURRING ASBESTOS
- OPPORTUNITIES FOR CONTRACTORS, ENGINEERS & ARCHITECTS
- PITTMAN WASH
- ROAD WORK PROJECTS
- SAFE ROUTES TO SCHOOL
- TELECOMMUNICATIONS LEASES & AGREEMENTS
- THE CANYONS UPDATES
- TRAFFIC INFORMATION
- BOARDS & COMMISSIONS

## Pittman Wash

The Pittman Wash is part of a regional flood control network and stretches four miles between Pebble Road and Arroyo Grande Boulevard.

Using the links below, you can learn more about the wash and how it is maintained.

[The Vital Role  
Stormwater Flow Video  
Environmental Assessment](#)

[History of the Pittman Wash  
Management Criteria  
Public Outreach & Stakeholder Group](#)



# Pittman Wash webpage

[www.cityofhenderson.com/PittmanWash](http://www.cityofhenderson.com/PittmanWash)

CityofHenderson.com

The Official Website of the City of Henderson, Nevada

PAY

CALENDAR

NEWS

MAPS

JOBS

CONTACT

RESIDENTS

VISITORS

GOVERNMENT

BUSINESS

HAPPENINGS

Henderson City Hall is currently closed to visitors.

For information and updates on COVID-19, call 702-267-INFO or click [here](#).

HOME - PUBLIC WORKS

ABOUT - PUBLIC WORKS

MEET THE DIRECTOR

DIVISIONS

BIKE HENDERSON

CAPITAL IMPROVEMENT PLAN

FLOOD CONTROL

FORMS

FUEL REVENUE INDEXING INFORMATION

GIS

NATURALLY OCCURRING ASBESTOS

OPPORTUNITIES FOR CONTRACTORS, ENGINEERS & ARCHITECTS

PITTMAN WASH

ROAD WORK PROJECTS

SAFE ROUTES TO SCHOOL

TELECOMMUNICATIONS LEASES & AGREEMENTS

THE CANYONS UPDATES

TRAFFIC INFORMATION

BOARDS & COMMISSIONS

Pittman Wash Maintenance

To protect public infrastructure, private property, and the health and safety of citizens and visitors, annual maintenance is performed along the Pittman Wash to remove woody, invasive and noxious vegetation.

Work will take place October-March between Pecos Road and Arroyo Grande Boulevard.

Pittman Wash Management Criteria

Pittman Wash - examples of routine maintenance



Before maintenance the manhole is blocked by vegetation which can interrupt water flow



After maintenance the manhole is cleared of vegetation helping to ensure proper water flow

Pittman Wash Stakeholder Group

The City of Henderson has established a stakeholder group to help keep neighbors adjacent to the Pittman Wash informed about the maintenance programs being performed by the City's Parks and Recreation, Utilities, and Public Works Departments.

The Stakeholder Group meets monthly and is comprised of one representative from most communities adjacent to the Wash between Pebble Road and Arroyo Grande Boulevard. Participating representatives will

LIVE OPERATOR

Online

© 2017 City of Henderson | [Privacy Policy](#) | [Contact Henderson](#) | [Accessibility](#)

f

t

ig

YouTube

rss

envelope

Select Language

CityofHenderson.com

The Official Website of the City of Henderson, Nevada

PAY

CALENDAR

NEWS

MAPS

JOBS

CONTACT

RESIDENTS

VISITORS

GOVERNMENT

BUSINESS

HAPPENINGS

Henderson City Hall is currently closed to visitors.

For information and updates on COVID-19, call 702-267-INFO or click [here](#).

Meetings

Date	Topic
August 2019	History, purpose and flood control regulations of Pittman Wash
September 2019	Upcoming flood control maintenance
October 2019	Vegetation
November 2019	General Management Criteria for the maintenance of unlined flood control channels
December 2019	Fire hazards and fuel reduction
January 2020	Maintenance responsibility/mapping questions (survey right-of-way)
February 2020	Sewer maintenance and its importance in the wash

Meeting Presentation Materials

August 2019

08-21-19 Agenda Upper Pittman Wash Stakeholder Group

Flood Control Regulations for Maintenance Activity (Pittman Wash 08-21-19) presentation

History & Purpose (Pittman Wash 8-21-19) presentation

September 2019

2019--09-18 Agenda Upper Pittman Wash (Stakeholder Group)

2019--09-18 Upcoming Flood Control Maintenance presentation

October 2019

Pittman Wash webpage

[www.cityofhenderson.com/PittmanWash](http://www.cityofhenderson.com/PittmanWash)



# Southern Nevada Health District

Vivek Raman



# Mosquito & Rodent Prevention

---

**Vivek Raman, SNHD**

**June 17, 2020**

# Overview

**Mosquito Surveillance**

**Pittman Wash**

**West Nile Virus**

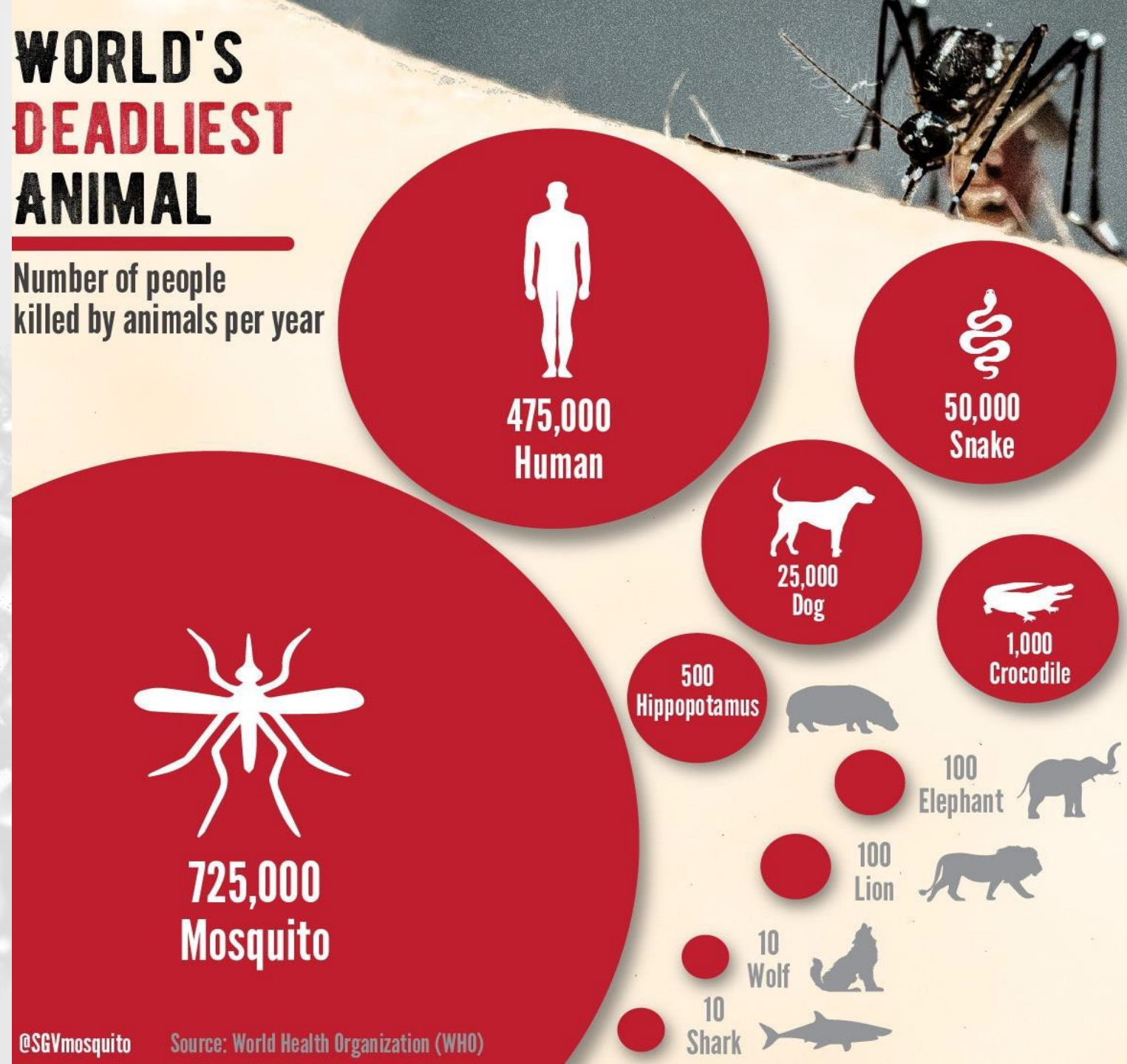
**Rodent Prevention**



# Why Mosquito Surveillance?

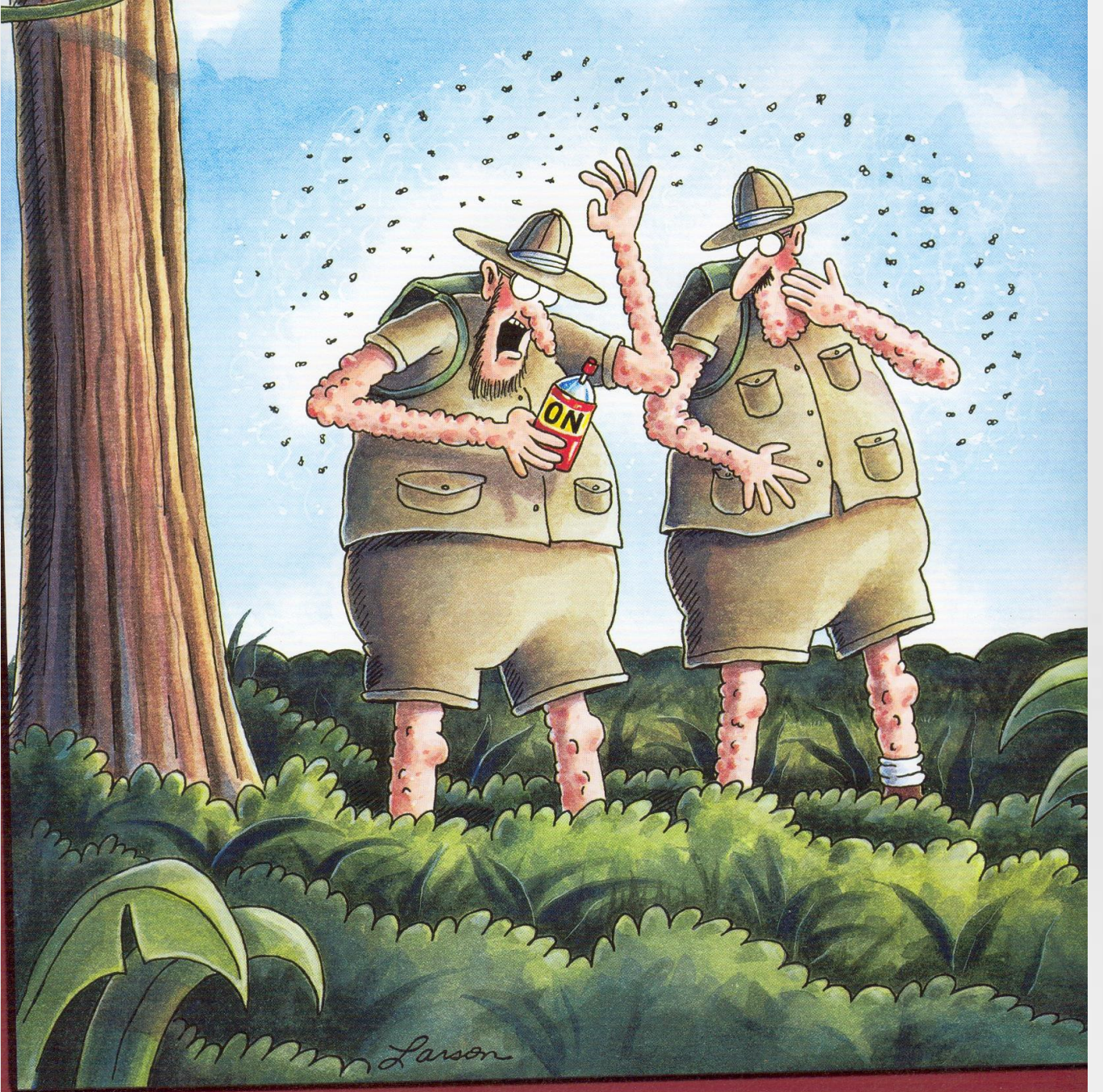
## WORLD'S DEADLIEST ANIMAL

Number of people  
killed by animals per year



Prevention starts  
with you!

---



“Wait a minute! ... McCallister, you fool! *This* isn’t what I said to bring!”

# Protect yourself from mosquito bites



## Daytime is most dangerous

Mosquitoes that spread chikungunya, dengue, and Zika are aggressive daytime biters. They can also bite at night.



## Use insect repellent It works!

Look for the following active ingredients:  
• DEET • PICARIDIN • IR3535



## Wear protective clothes

Wear long-sleeved shirts and long pants and use insect repellent. For extra protection, treat clothing with permethrin.



## Mosquito-proof your home

Use screens on windows and doors. Use air conditioning when available. Keep mosquitoes from laying eggs in and near standing water.

For more information:

[www.cdc.gov/chikungunya](http://www.cdc.gov/chikungunya) • [www.cdc.gov/dengue](http://www.cdc.gov/dengue) • [www.cdc.gov/zika](http://www.cdc.gov/zika)



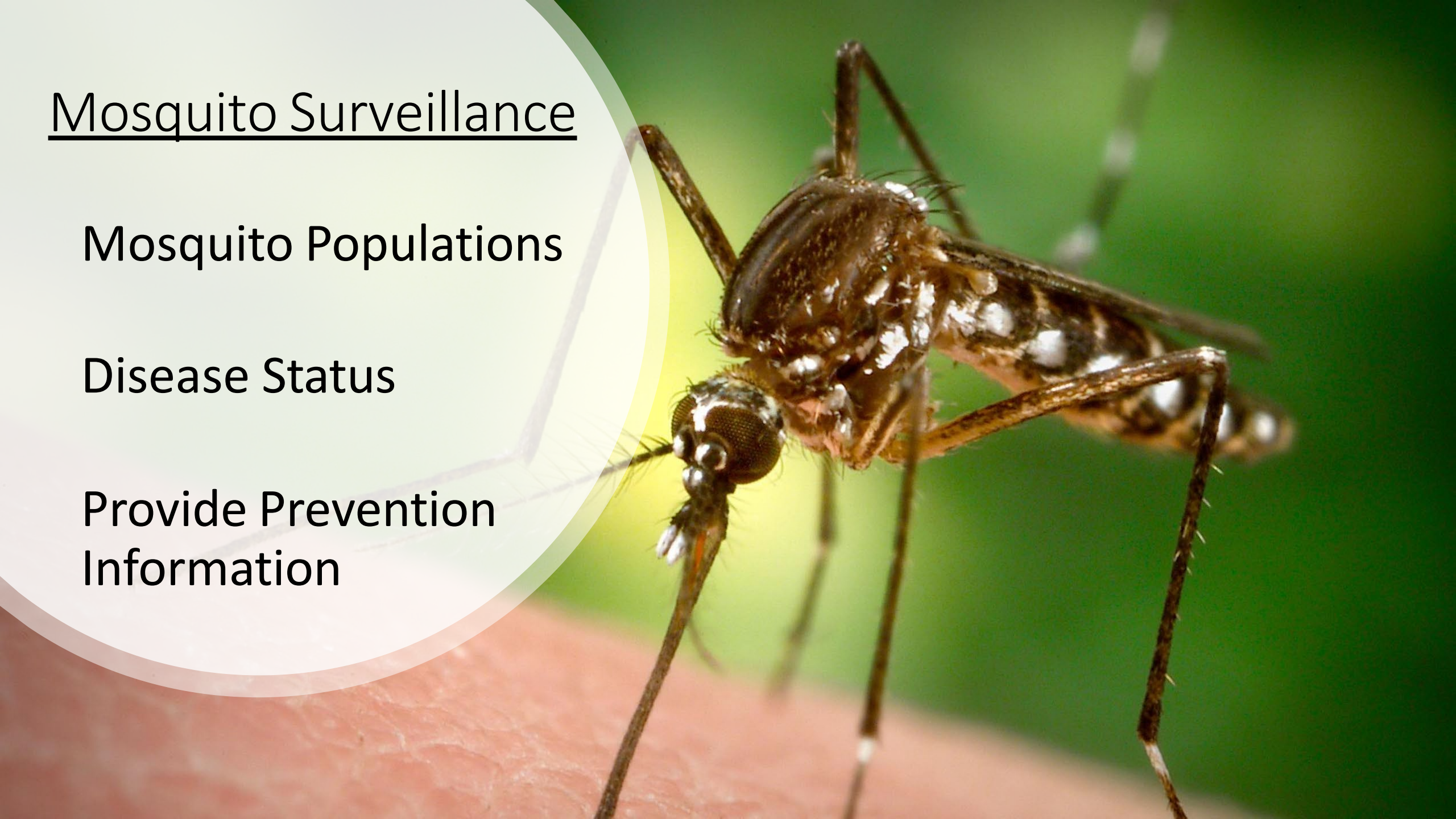
**U.S. Department of  
Health and Human Services**  
Centers for Disease  
Control and Prevention

# Mosquito Surveillance

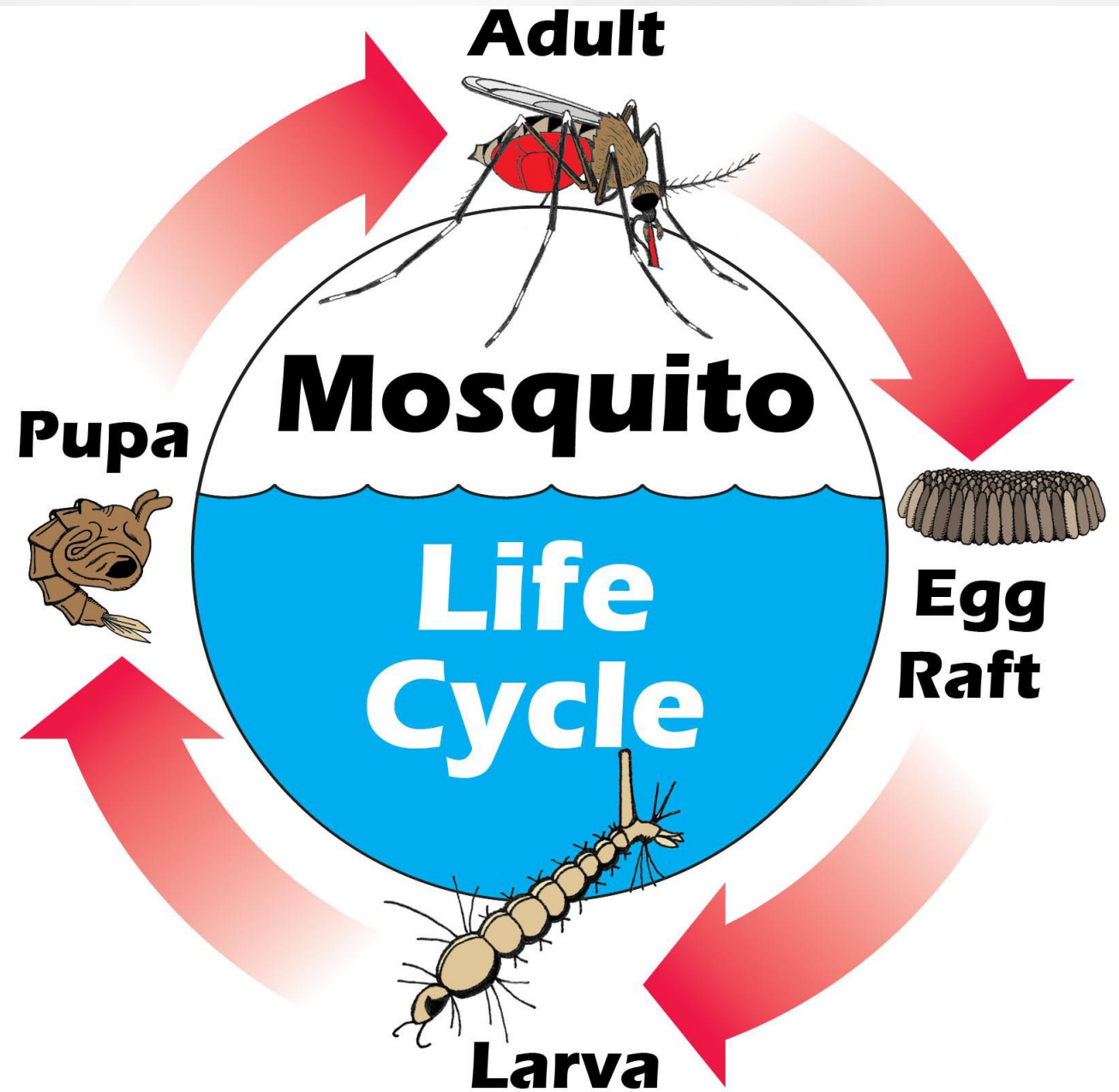
Mosquito Populations

Disease Status

Provide Prevention  
Information



- Typically 7-10 days
- Light and temperature
- Interventions critical when in aquatic stage







Midge Fly

---

# Crane Fly

---



Dry Ice Trap

05/02/2012 14:17

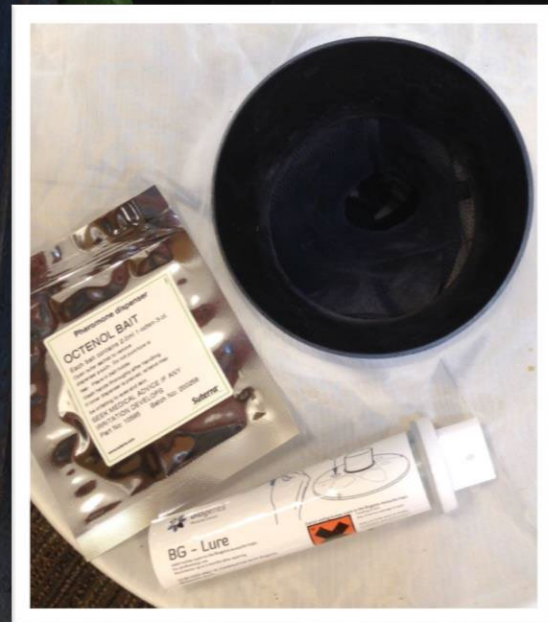


# Gravid Trap



05/07/2014 12:50

# BG –Sentinel Trap



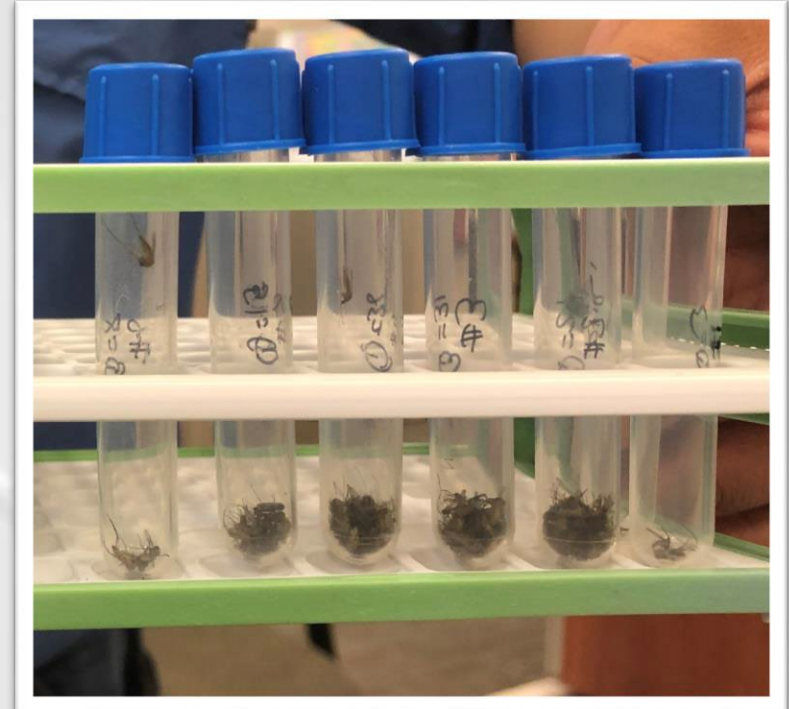
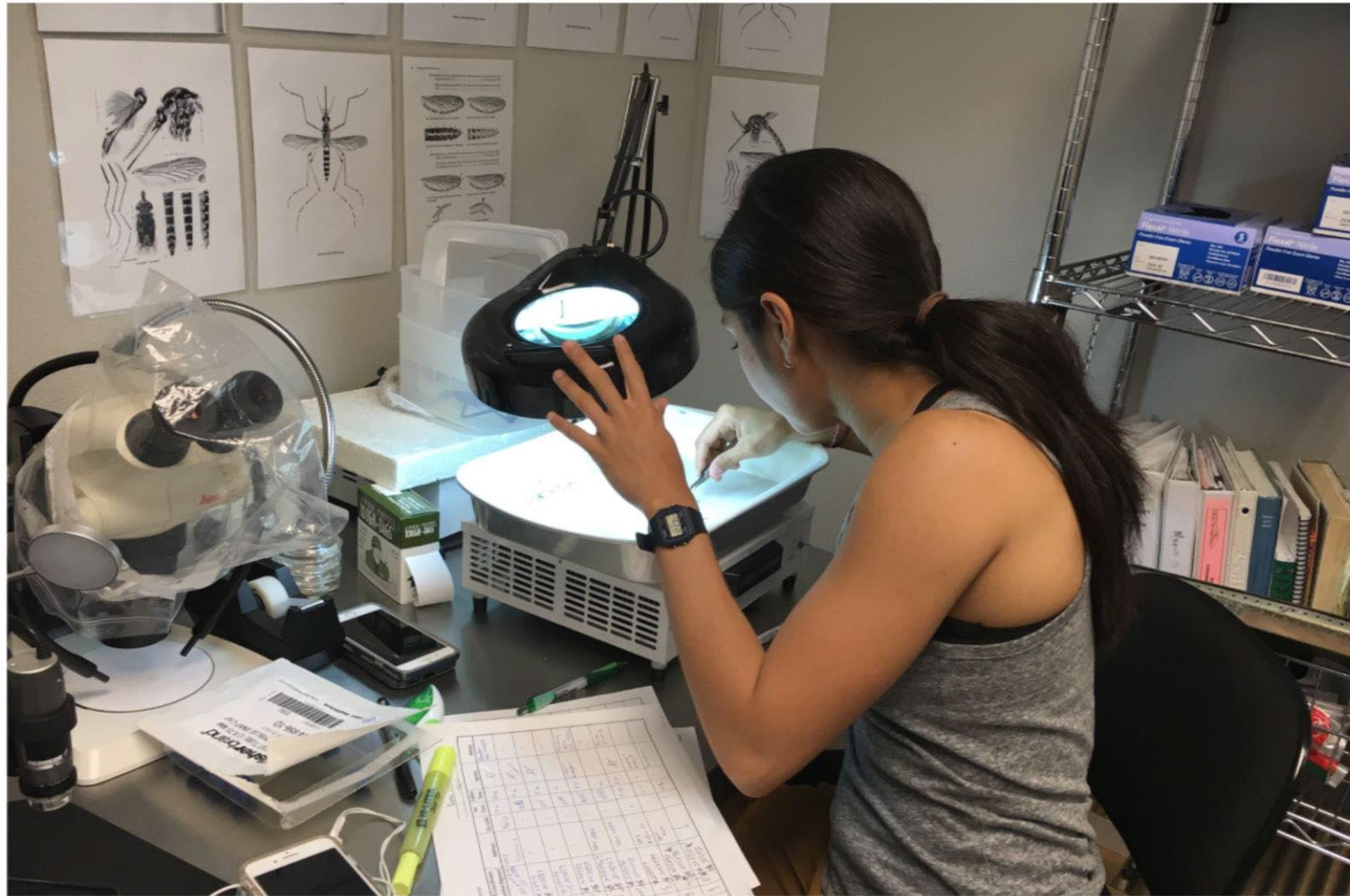
# Identification and Testing

Christy Munaretto  
Date: 8/22  
Location: JASS + JALSTO  
EVS Gravid BG Sentinel





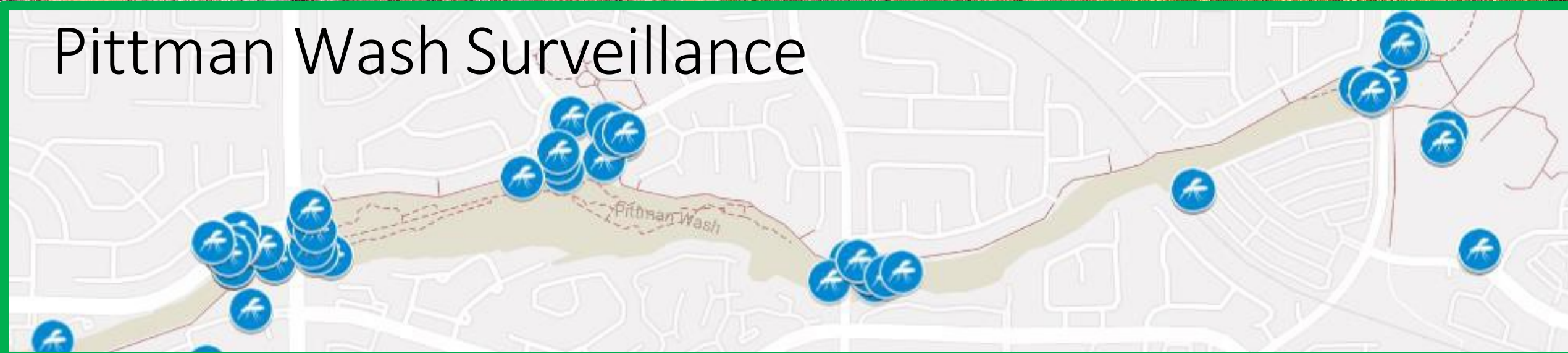
# Identification and Testing







# Pittman Wash Surveillance



# Windmill & GVP













11/22/2006 10:40











07/25/2016 14:13

# Not An Abatement Agency



## Integrated Mosquito Management

- **Conduct spot larval treatments**
- **Jurisdictional referrals for environmental remediation**
- **Minimal abatement supplies/ equipment for emergencies**





# Mosquito Diseases

---

# Mosquito Bite Prevention (United States)



Not all mosquitoes are the same. Different mosquitoes spread different viruses and bite at different times of the day.

Type of Mosquito

Viruses spread

Biting habits



*Aedes aegypti*,  
*Aedes albopictus*

Chikungunya,  
Dengue, Zika

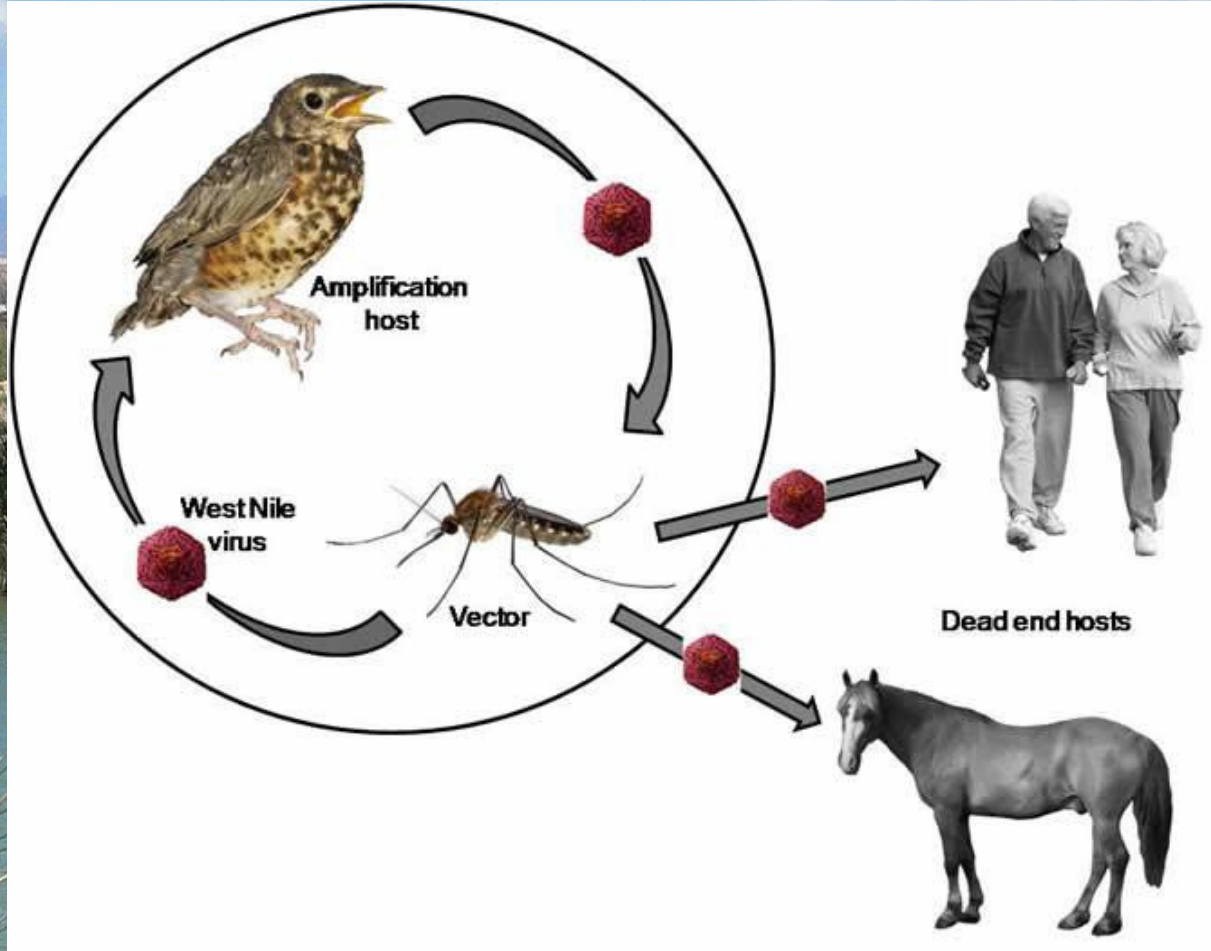
Daytime



*Culex* species

West Nile

Dusk (evening) to  
dawn (morning)

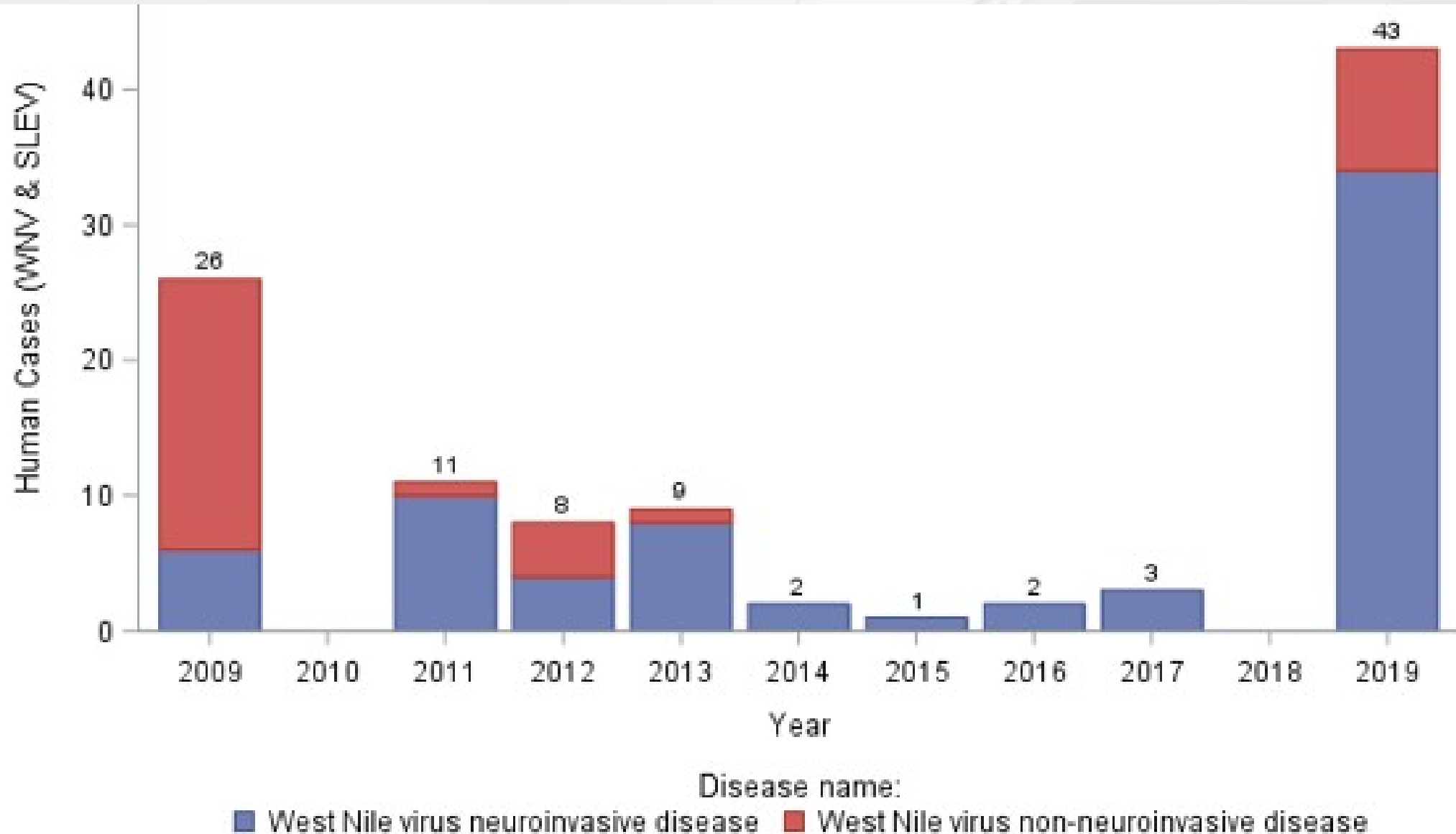


# West Nile Virus & St. Louis Encephalitis

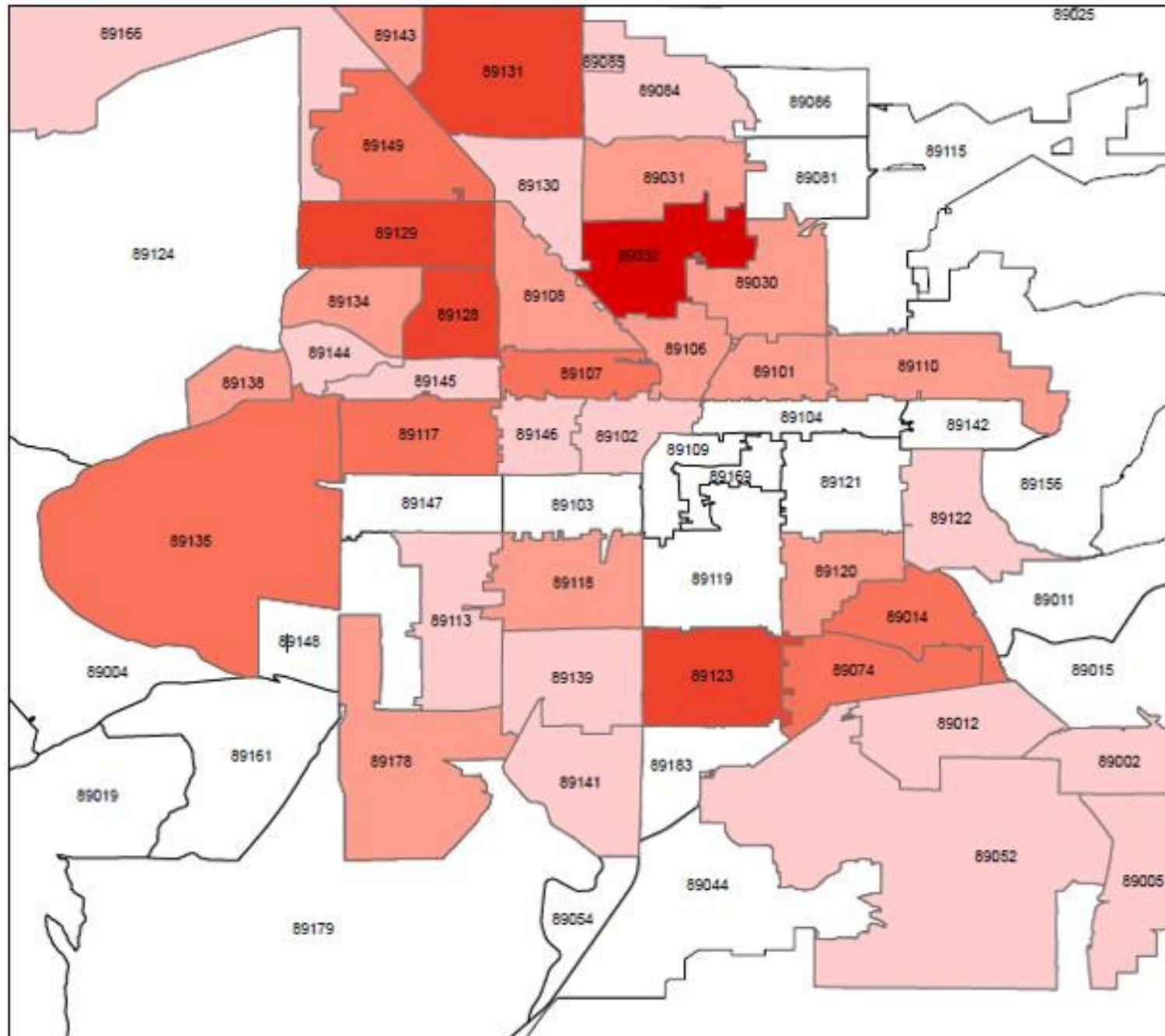
- **Affects the Central Nervous System**
- **3-14 day incubation period**
- **4 out of 5 no symptoms**
  - **Mild symptoms - fever, aches, rash**
- **1 in 150 will develop severe symptoms**
  - **High fever, disorientation, coma, paralysis**
- **Immune compromised, young & elderly**



# 2019 – WNV Human Cases



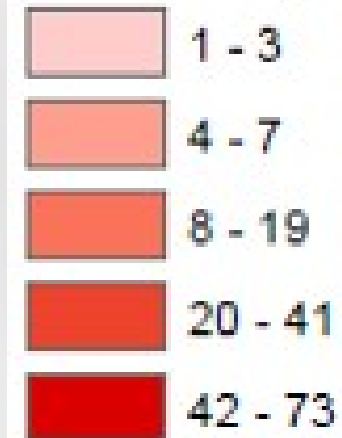
Map 1: West Nile Virus Activity, Clark County NV



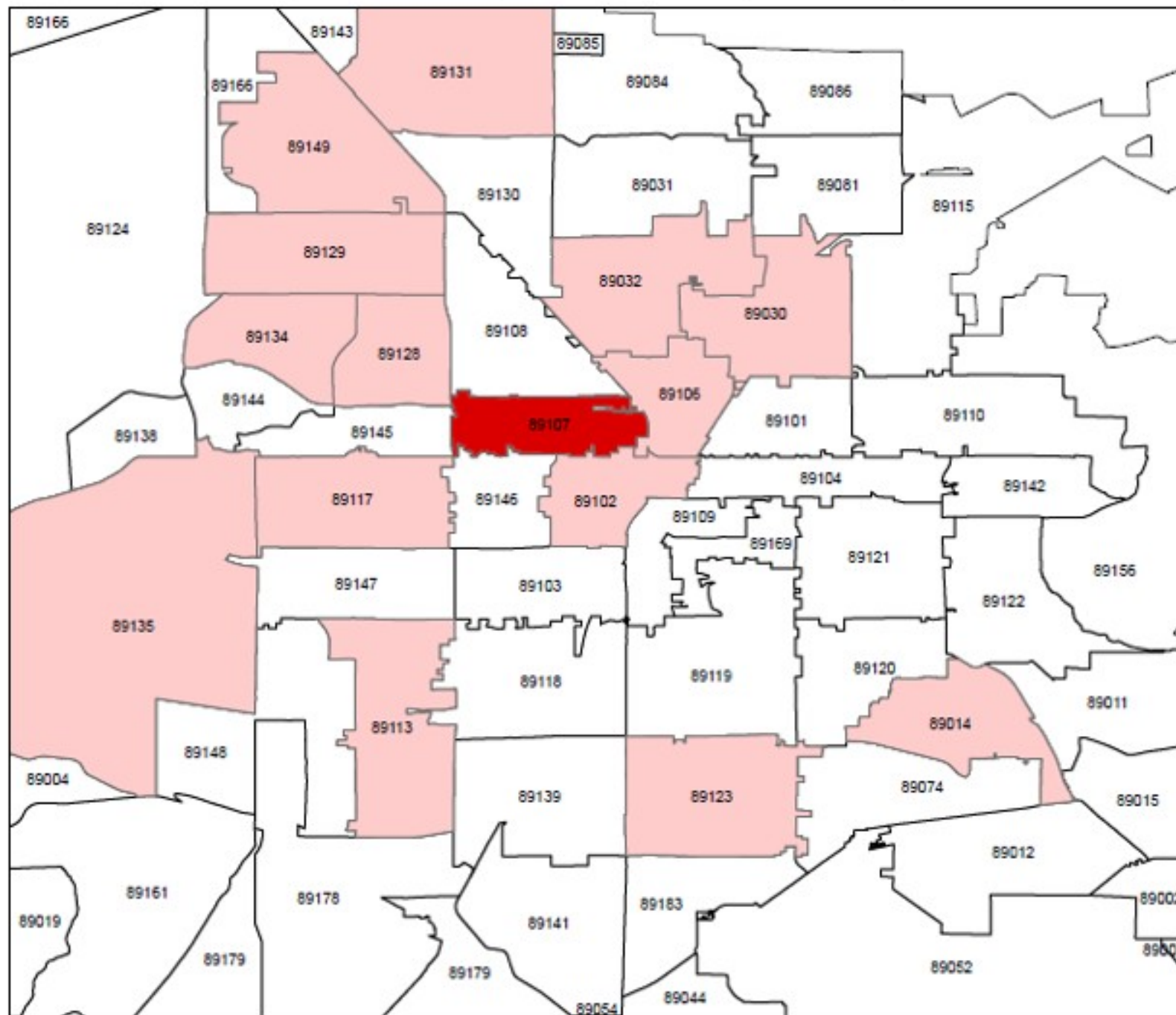
2019

## West Nile Virus

### Positive pool submissions



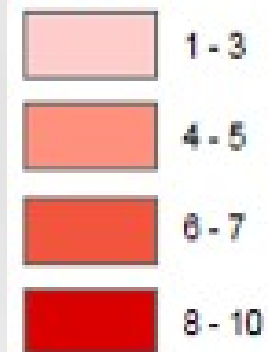
Map 2: St. Louis Encephalitis Virus Activity, Clark County NV



2019

## St. Louis Encephalitis Virus

Positive pool submissions



## [Mosquito Surveillance](#)

Annual Mosquito Surveillance Reports

Mosquito Bite Prevention

Mosquito Breeding Prevention

Mosquito Lifecycle

Mosquito Surveillance DUET®  
Adulticide Frequently Asked Questions



# Mosquito Surveillance

West Nile Virus, a mosquito borne disease, was first identified in Clark County in 2004. In response to this public health threat, the Southern Nevada Health District developed a Vector Surveillance program to survey mosquito populations for diseases including [West Nile Virus \(WNV\)](#), [Western Equine Encephalitis \(WEE\)](#), and [Saint Louis Encephalitis \(SLE\)](#).

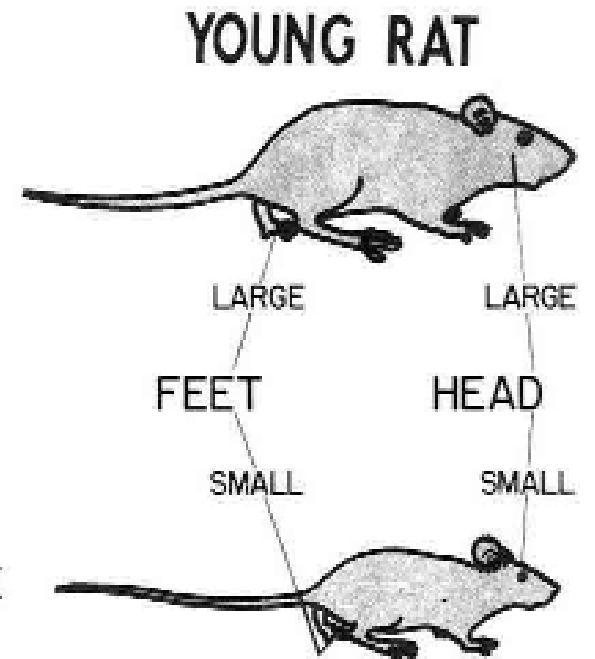
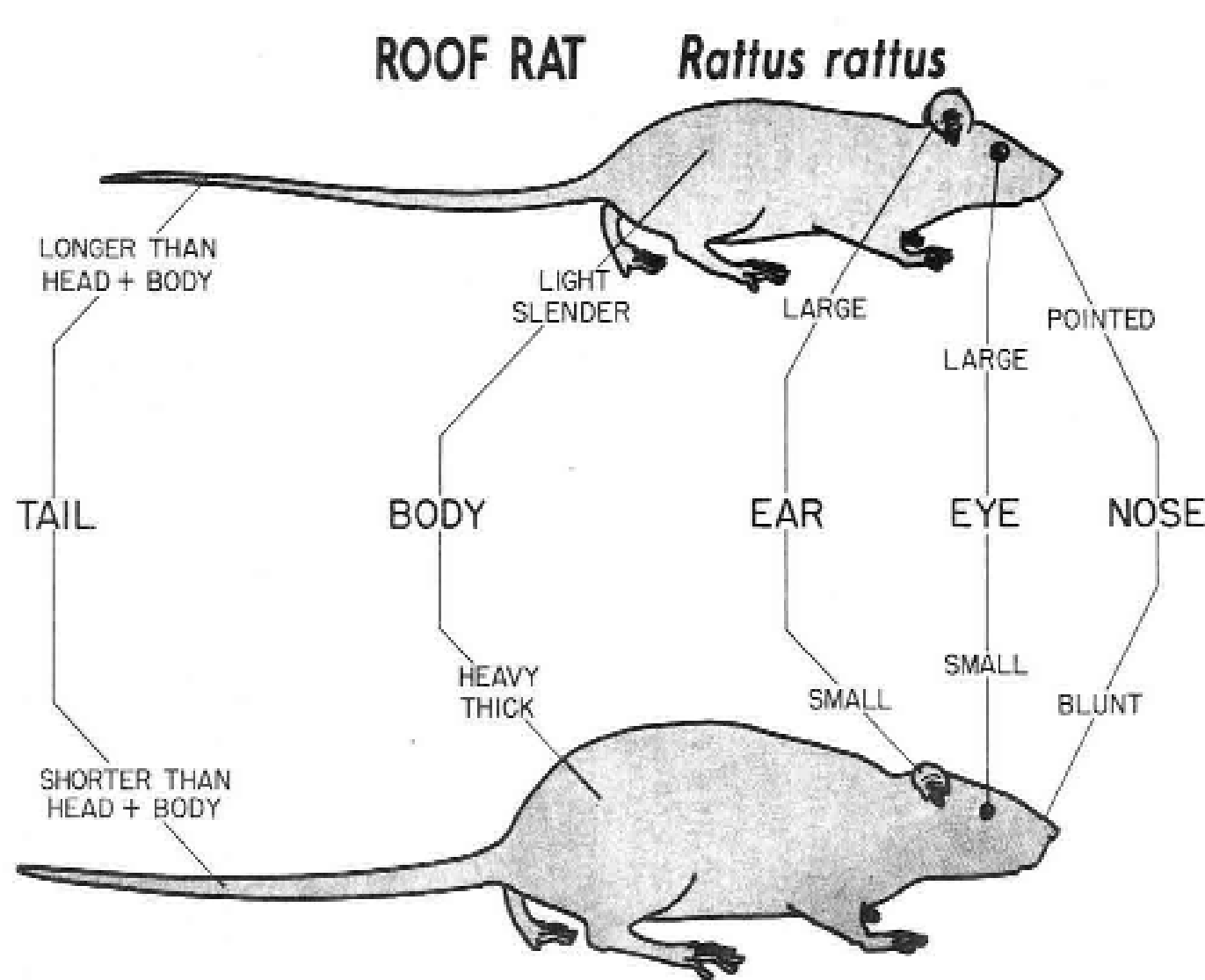
Aside from disease status, mosquito surveillance is used to identify the type of mosquitoes breeding in the community. Emerging diseases like [Zika virus](#), [Chikungunya](#) and [Dengue](#) are carried by mosquitoes. Keeping an eye on the type of mosquito species is very important as it can be an early warning for new disease introduction to Las Vegas.

[www.snhd.info](http://www.snhd.info)-search 'Mosquito'  
702-759-1633 –Report Mosquito Activity



## Rodent Prevention

- Non Native,
- Resourceful
- Quick Breeders
- Few Predators



**HOUSE MOUSE**  
*Mus musculus*

PREPARED BY  
U.S. Department of  
HEALTH, EDUCATION, AND WELFARE  
Public Health Service  
Communicable Disease Center  
Atlanta, Georgia



RED TAG

RED TAG

RED TAG

WHITE TAG  
323  
4447  
27-5727

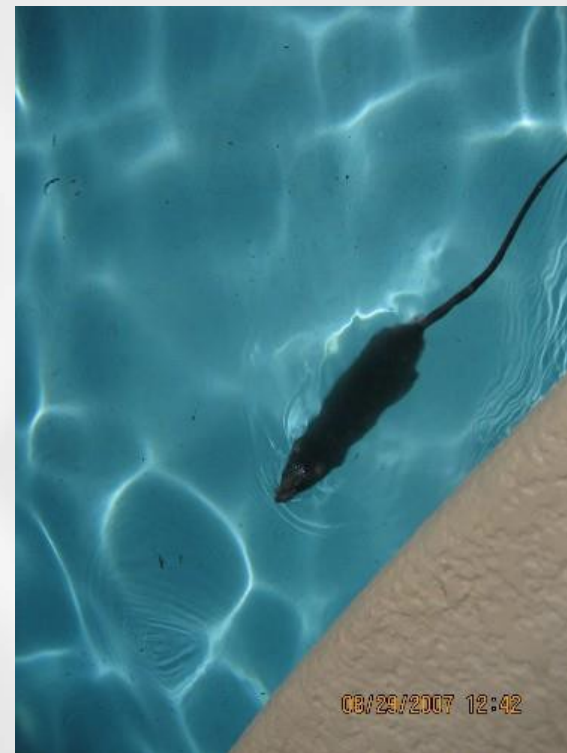
WHITE TAG  
323  
4447  
27-5727

WHITE TAG  
323  
4447  
27-5727

WHITE TAG  
323  
4447  
27-5727















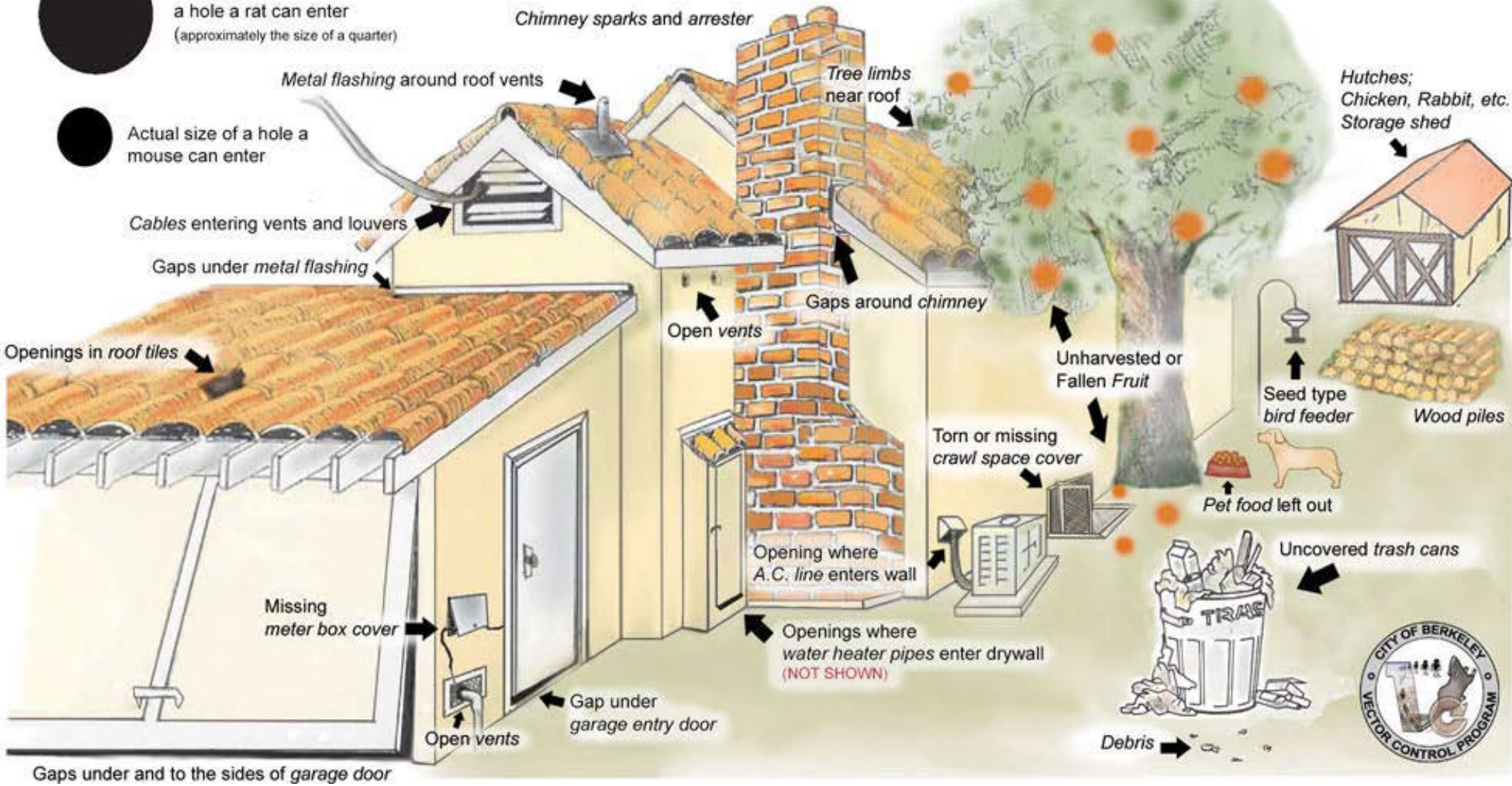
# Common Rodent Entry & Harborage Locations



Actual size of a hole a rat can enter  
(approximately the size of a quarter)



Actual size of a hole a mouse can enter



# 💡 Rodent Pests

Old-World or European rats, roof rats (*Rattus rattus*) and Norway Rats (*Rattus norvegicus*), have been living in association with human populations for centuries. Once transported into a new geographic area, they generally breed quickly, since they have adapted to living in urban areas.

For information on the Rodent Surveillance Program visit the [Zoonotic Diseases](#) webpage.

## How To Inspect For Rodents on Your Property

Question	Yes	No	Necessary Correction if "Yes"
<b><i>Building</i></b>			
1. Does my home (or other structure) have gaps or holes bigger than 1/4 inch:			
a. In the foundation?			Seal with "qwik seal" or other good sealing material.
b. In vents?			Secure vents with mesh screen less than 1/4 inch opening
c. At door thresholds?			Replace door sweep
d. At conduits (plumbing, electrical, air)?			Seal around openings with "qwik seal" or other good sealing material
e. At wall junctures?			Seal less than 1/4 inch with silicone. Seal greater than 1/4 inch with "qwik seal"
2. Are there signs of rodents within the structure:			
a. Gnawing on food packaging, linens, furnishings, paper goods?			Find entrance to home and seal. Discard the gnawed items.

[www.snhd.info](http://www.snhd.info)—search  
'Rodents'



Vivek Raman  
702-759-1633  
[raman@snhd.org](mailto:raman@snhd.org)  
[www.snhd.info](http://www.snhd.info)