

September 18, 2019
Upper Pittman Wash Stakeholder Group Meeting

Upcoming Flood Control Maintenance

Contact Henderson

Definitions

Flood Control Facilities in Henderson

Contact Henderson

Henderson, Nevada

A PLACE TO CALL HOME

Quick Links

EMPLOYMENT

VOLUNTEER CONNECTION

EVENTS

BUY TICKETS

CITY DEPARTMENTS

CONTACT HENDERSON

ONLINE REGISTRATION

CUSTOMER SURVEY

City of Henderson

Incorporated in 1953, Henderson has developed into a community with premier services and amenities.

Contact Henderson

Download the app on your smart phone or use the portal on the webpage at

www.cityofhenderson.com

Request a Presentation:

Addah Moritz-Smith

702-267-2009

Addah.Moritz-Smith@cityofhenderson.com

Neighborhood Cleanup Trailer

702-267-4017

Rayna.Booker@cityofhenderson.com



Definitions

100-year storm

A one-hundred-year storm is a storm event that has a 1 in 100 chance of being equaled or exceeded in any given year. The 100-year storm is also referred to as the 1% storm, since its annual exceedance probability is 1%.



Home >> Weather

Monsoon season raises flash-flood concerns in Las Vegas Valley



Floodwaters rush through the Pittman Wash in Henderson during a monsoon rainstorm on Wednesday, July 19, 2017. (Patrick Connolly/Las Vegas Review-Journal) @PConnPie

2-year storm event

100-year storm

Each time we have a storm, imagine 99
blue marbles... and 1 red one.





Gabions

A type of engineered channel lining used for slope stability and scour protection ensuring long term functional and structural integrity.

Flood Control Facilities in Henderson

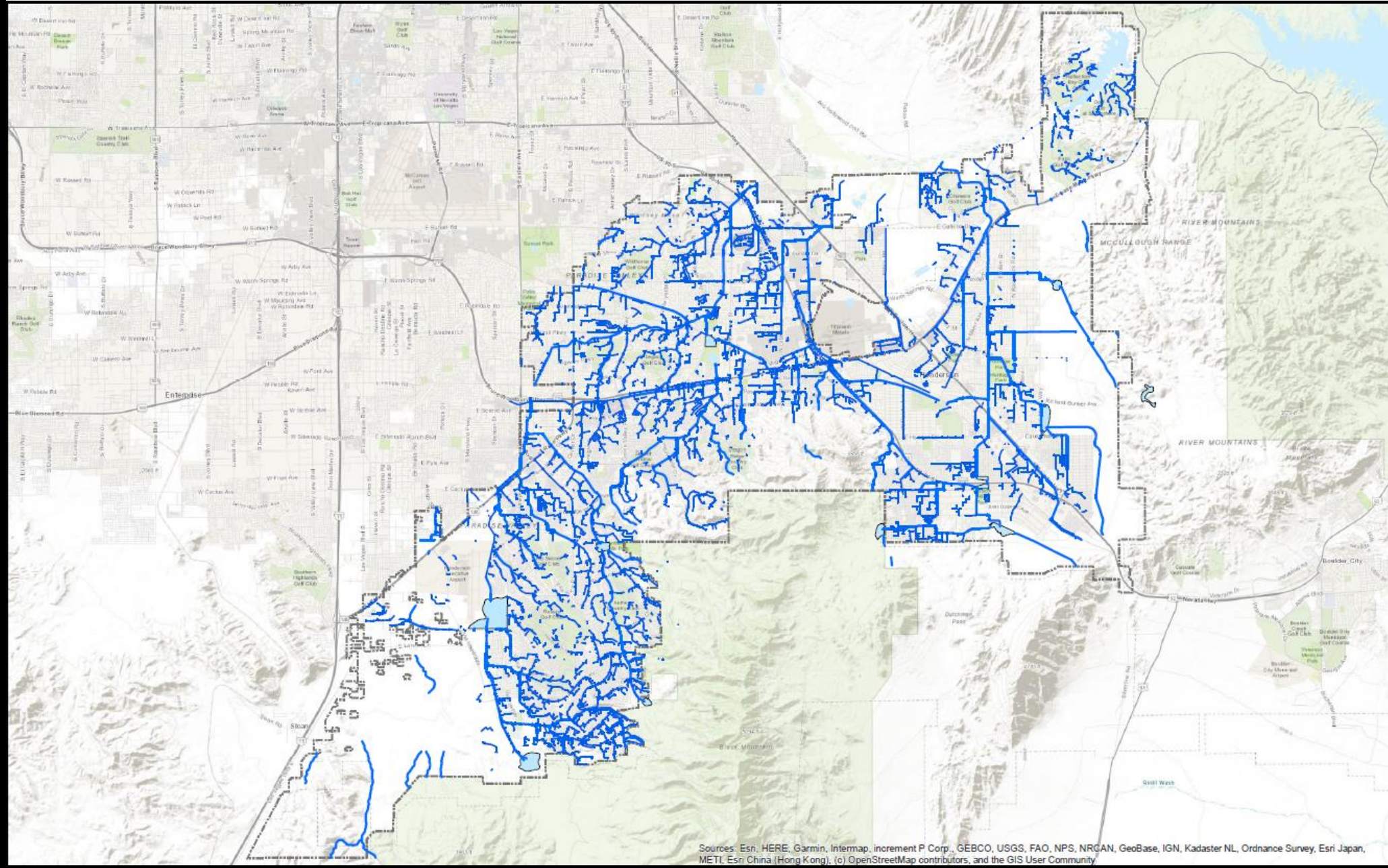


119 miles
521 acres

Regional Flood
Control
Facilities

267 miles
4,896 inlets

Local Drainage
Facilities



Sources: Esri, HERE, Garmin, Intermap, increment P Corp., GEBCO, USGS, FAO, NPS, NRCAN, GeoBase, IGN, Kadaster NL, Ordnance Survey, Esri Japan, METI, Esri China (Hong Kong), (c) OpenStreetMap contributors, and the GIS User Community

Flood Control Facilities within Henderson

Upcoming Flood Control Maintenance Activity



Search
Name Search

Scientific Name

- State Search
- Advanced Search
- Search Help

PLANTS Topics

- Alternative Crops
- Characteristics
- Classification
- Cover Crops
- Culturally Significant
- Distribution Update
- Documentation
- Fact Sheets & Plant Guides
- Introduced, Invasive, and Noxious Plants**
- Threatened & Endangered
- Wetland Indicator Status

Image Gallery

- 50,000+ Plant Images

Download

- Complete PLANTS Checklist
- State PLANTS Checklist

You are here: [Home](#) / [Introduced, Invasive and Noxious Plants](#) / [Introduced, Invasive, and Noxious Plants Results](#)

Introduced, Invasive, and Noxious Plants

NRCS Invasive Species Policy
Invasive Species Executive Order 13112

Nevada State-listed Noxious Weeds

52 records returned

Click on an accepted name below to view its PLANTS Profile with more information, and web links if available. Noxious weeds that are synonyms retain their noxious status, and are indented beneath the current PLANTS accepted name.

Nevada Administrative Code. 2003. *Control of insects, pests, and noxious weeds* (20 October 2003). State of Nevada.

| Symbol | Scientific Name | Noxious Common Name | State Noxious Status† | Native Status* |
|--------|---|-----------------------|-----------------------|----------------------------------|
| ACRE3 | <i>Acroptilon repens</i> (L.) DC. | | | L48 (I), CAN (I) |
| CERE6 | <i>Centaurea repens</i> L. | Russian knapweed | NW | |
| ALMA12 | <i>Alhagi maurorum</i> Medik. | | | L48 (I) |
| ALCA | <i>Alhagi camelorum</i> Fisch. | camelthorn | NW | |
| ANCO2 | <i>Anthemis cotula</i> L. | mayweed chamomile | NW | L48 (I), AK (I), HI (I), CAN (I) |
| CADR | <i>Cardaria draba</i> (L.) Desv. | whitetop, hoary cress | NW | L48 (I), CAN (I) |
| CANU4 | <i>Carduus nutans</i> L. | musk thistle | NW | L48 (I), CAN (I) |
| CECA2 | <i>Centaurea calcitrapa</i> L. | purple starthistle | NW | L48 (I), CAN (I) |
| CEDI3 | <i>Centaurea diffusa</i> Lam. | diffuse knapweed | NW | L48 (I), CAN (I) |
| CEIB | <i>Centaurea iberica</i> Trevir. ex Spreng. | Iberian starthistle | NW | L48 (I) |
| CEME2 | <i>Centaurea melitensis</i> L. | Malta thistle | NW | L48 (I), HI (I), CAN (I) |
| CESO3 | <i>Centaurea solstitialis</i> L. | yellow starthistle | NW | L48 (I), CAN (I) |
| CESTM | <i>Centaurea stoebe</i> L. ssp. <i>micranthos</i> (Gugler) Hayek | | | L48 (I), HI (I), CAN (I) |
| CEMA4 | <i>Centaurea maculosa</i> auct. non Lam. | spotted knapweed | NW | |
| CEVIS2 | <i>Centaurea virgata</i> Lam. ssp. <i>squarrosa</i> (Willd.) Gugler | | | L48 (I) |

See website for full list...

Nevada: Noxious Weeds List (USDA)

<https://plants.usda.gov/java/noxious?rptType=State&statefips=32>

Invasive Weed Field Guide for the Las Vegas Wash

Developed By
the Las Vegas Wash
Project Coordination Team

Las Vegas Wash
Coordination
Committee

www.lvwash.org



Forbs

Russian thistle *Salsola tragus*



- **Description:** Annual forb
- **Height:** 5 feet
- **Flower:** White to pink, inconspicuous, lacks petals, blooms July to October
- **Leaf:** Bright green, sharp point at tip
- **Stem:** Often striped with red or purple, many-branched
- **Fruit:** Seeds, winged
- **Reproduction:** Seeds, often dispersed by tumbleweeds

Forbs

Shrubs/Trees

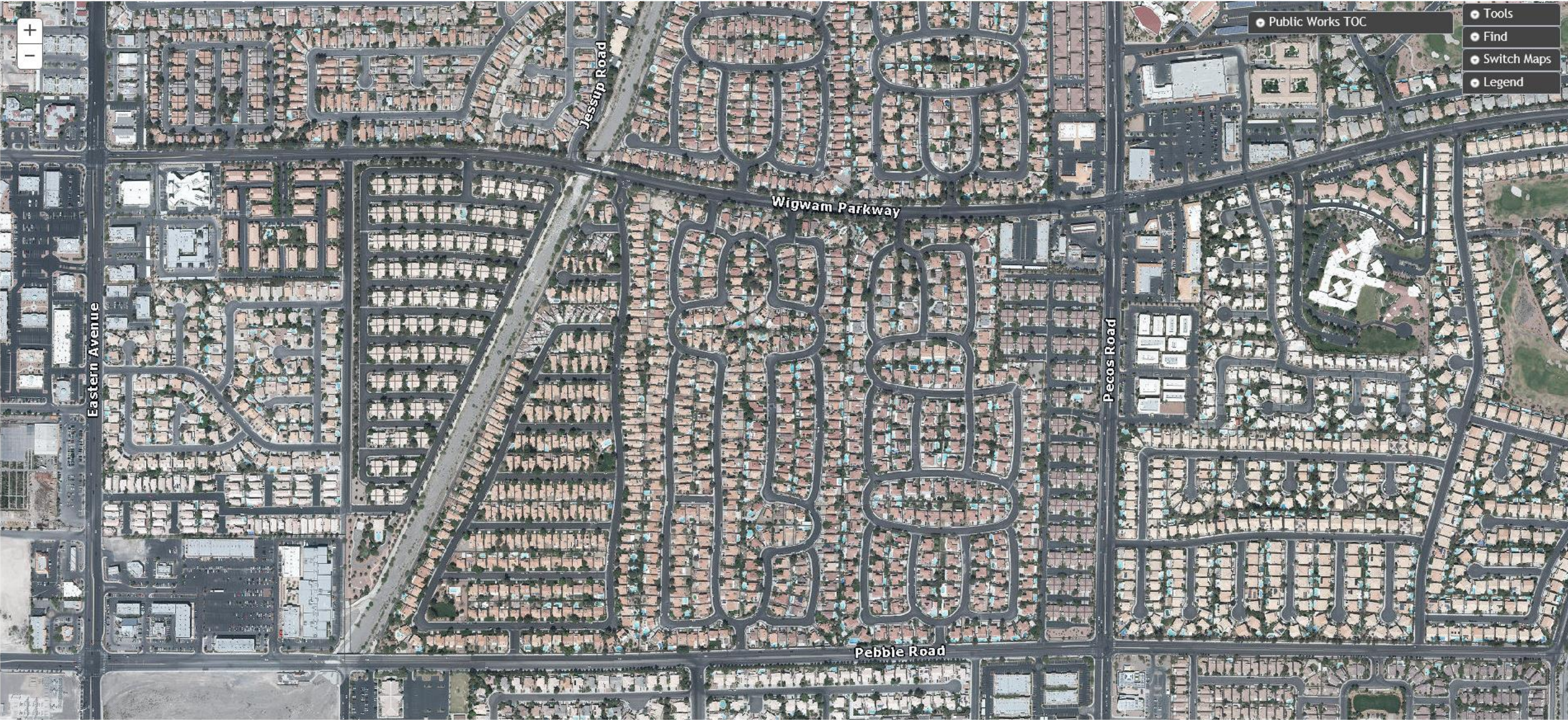
Tamarisk (Salt cedar) *Tamarix ramosissima*



- **Description:** Deciduous tree
- **Height:** 15 feet or more
- **Flower:** Pink to white, narrow drooping clusters, 1-2 inches long
- **Leaf:** Blue-green, scale-like, ¼ inch long
- **Stem:** Red-orange to brown, long, slender, bark becomes furrowed with time
- **Fruit:** Seeds, abundant production
- **Reproduction:** Seeds, roots, and suckers

Invasive Weed Field Guide for the Las Vegas Wash

https://www.lvwash.org/assets/pdf/resources_weed_guide.pdf



Pebble to Wigwam



Pebble to Wigwam
August 2019



Wigwam to Pecos



Wigwam to Pecos

August 2019



Pecos to Green Valley Parkway



February 2019



September 2019

Pecos to Green Valley Parkway

west of Green Valley looking upstream

February 2019

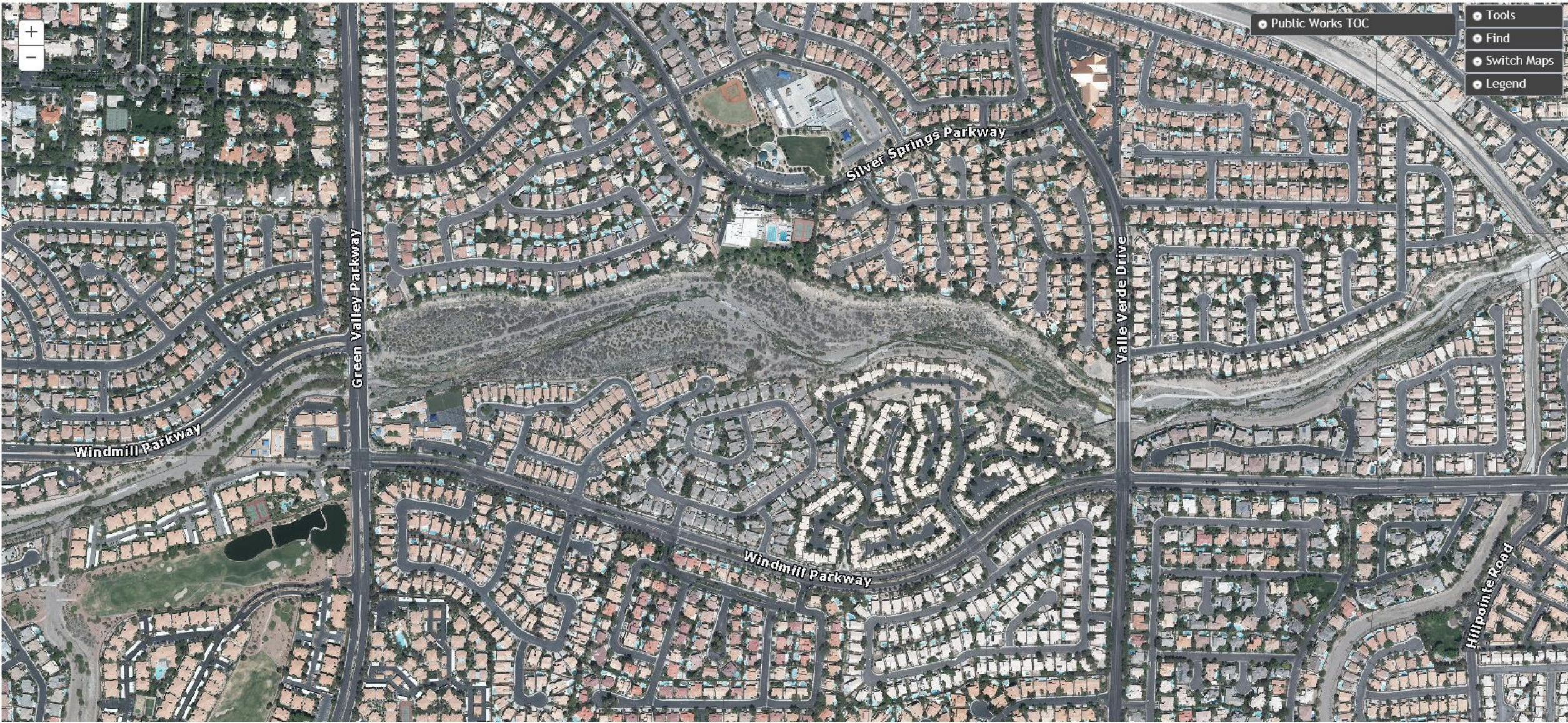


September 2019



Pecos to Green Valley Parkway

at the Green Valley Bridge looking upstream



Green Valley Parkway to Valle Verde

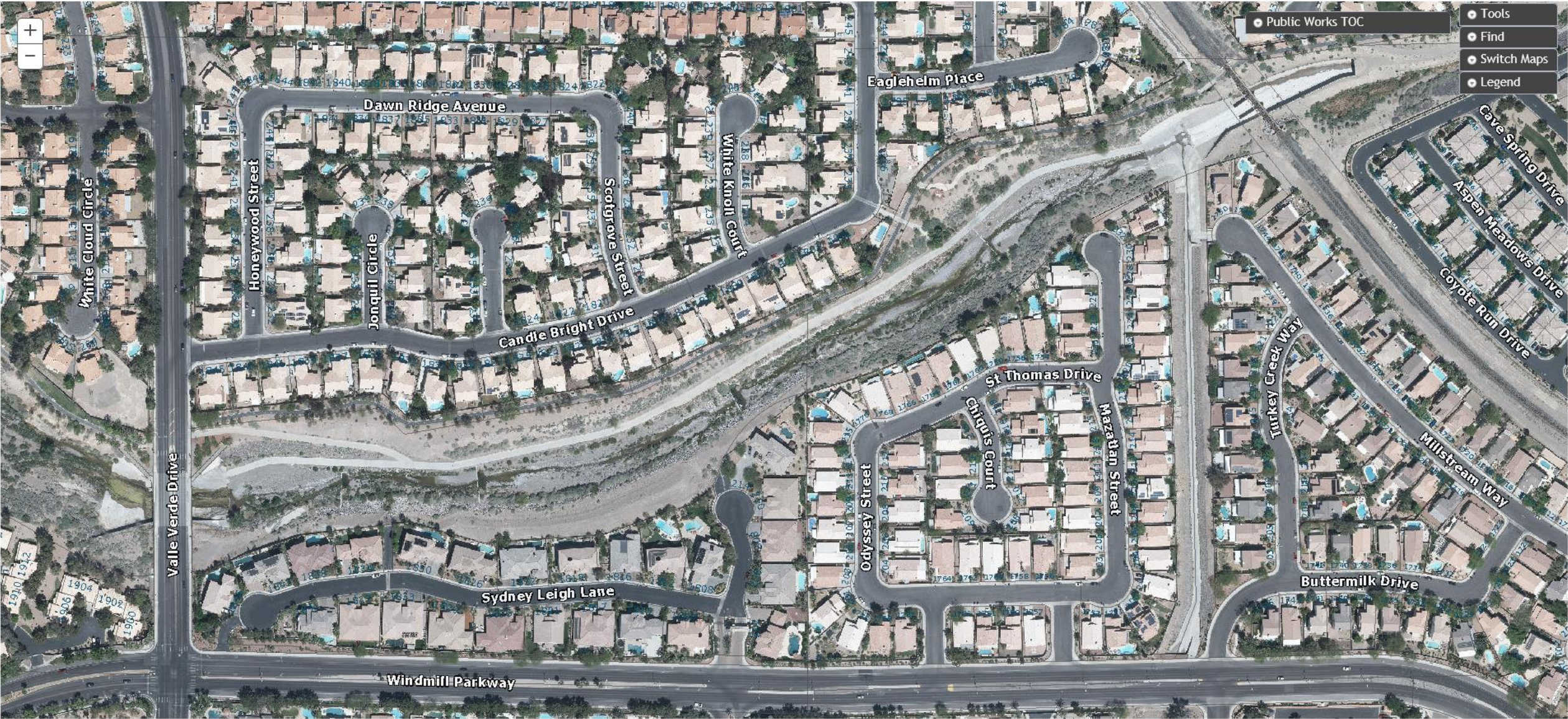
September 2019
Between Green Valley Parkway and Silver Springs Park



September 2019
Between Silver Springs Park and Valle Verde



Green Valley Parkway to Valle Verde



Valle Verde to UPRR Trestle

September 2019
Valle Verde looking downstream



September 2019
Between Valle Verde and UPRR Trestle



Valle Verde to UPRR Trestle



Valle Verde to UPRR Trestle



UPRR Trestle to Arroyo Grande



UPRR Trestle to Arroyo Grande (2011)



UPRR Trestle to Arroyo Grande September 2019