



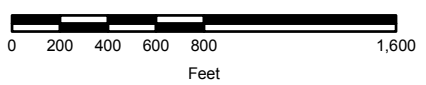
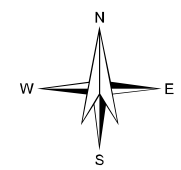
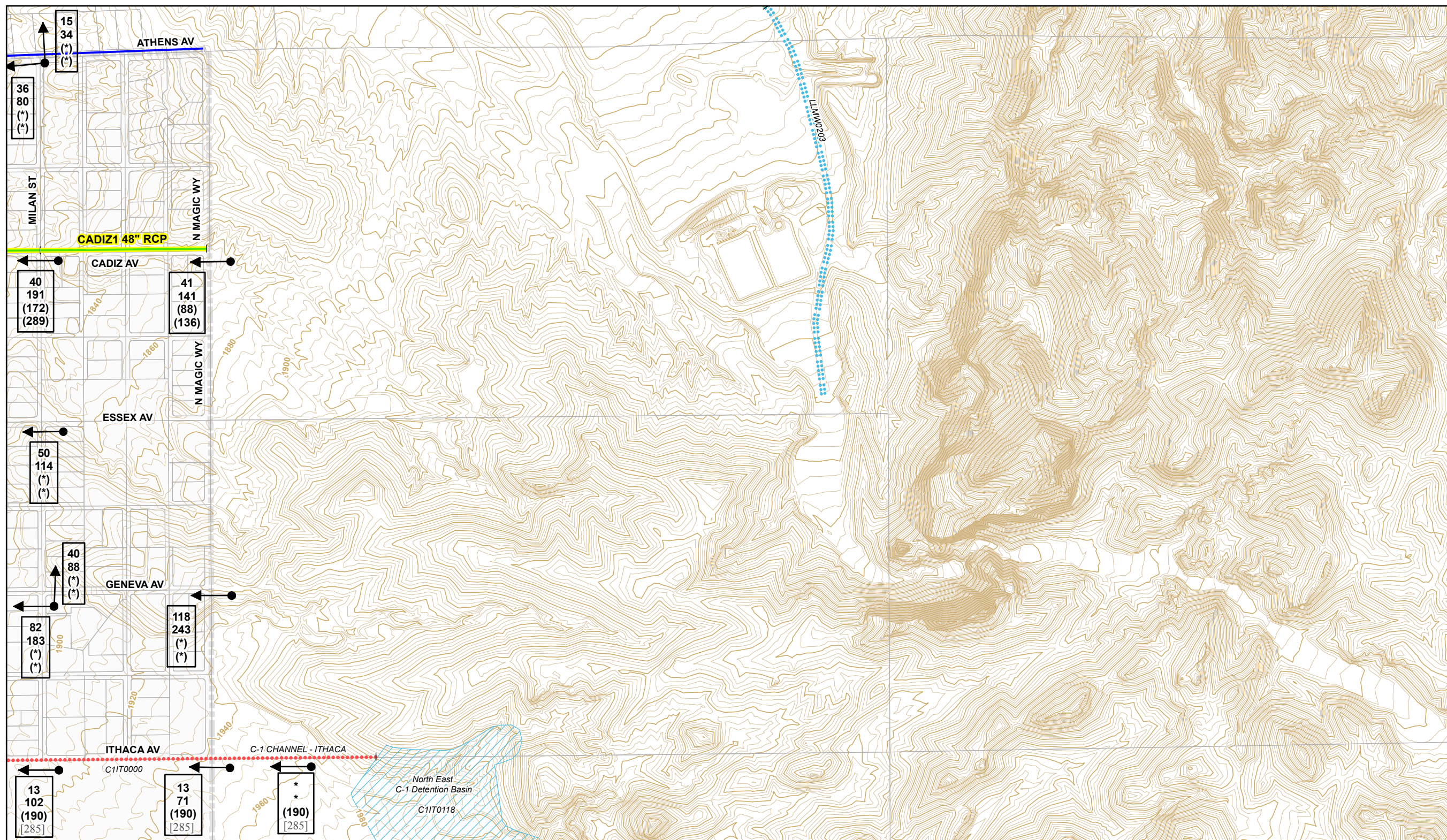
A Place To Call Home

### NEIGHBORHOOD FLOOD CONTROL MASTER PLAN

#### LEGEND

- Existing Regional Facility
- Category A Proposed Regional Facility
- Category B Proposed Regional Facility
- Existing Local Facility
- Proposed Local 10-Year Facility
- Proposed Local 100-Year Facility
- Detention Basin
- Regional Culvert
- Regional Bridge
- Local Culvert
- Local Bridge
- Regional Pipeline
- Regional Channel
- Regional Dike/Levee
- Local Storm Drain
- Local Channel
- Local Dike/Levee
- Regional ID-Mile Separator
- Local Facility Separator

FIGURE U-3



SCALE: 1 inch = 800 feet

Study Area Limit

Flow Arrow

**250** 10-Year Street Flow  
**500** 100-Year Street Flow  
**(300)** 10-Year Facility Flow  
**(800)** 100-Year Facility Flow

(Flows in CFS)

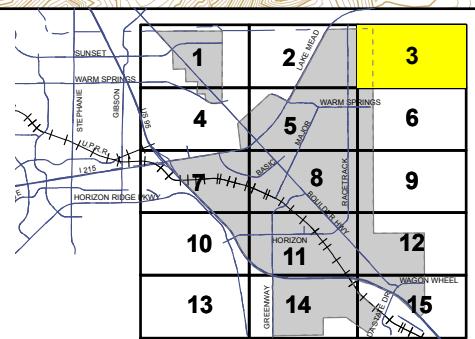
CCRFC Regional facilities have been shown with 100-year flow rates per the 2002 MPU or approved Master Plan Amendments / Changes.

**0** 10-Year Street Flow  
**0** 100-Year Street Flow  
**(300)** 10-Year Facility Flow  
**[999]** 100-Year Master Planned Facility Flow

(Flows in CFS)

NOTE: Ultimate drainage conditions are based on future Curve Number values with all flood control facilities in place.

100-Year flows at locations where a 100-Year subbasin concentration point does not exist in the hydrology model were based on area-weighted ratio of the 100-Year flows from concentration points upstream and downstream of the location.



#### ULTIMATE DRAINAGE CONDITIONS



2727 S. Rainbow Boulevard  
 Las Vegas, NV 89146-5148  
 Phone: (702) 873-7550  
 Fax: (702) 362-2597  
 Web Site: <http://www.vtnv.com>