



NEIGHBORHOOD FLOOD CONTROL MASTER PLAN

LEGEND

-  Sub-basin Boundary
 PPA020 Basin ID
 (10yr/100yr) Contributing flow from the basin (cfs)
 Flow Arrow

- | | |
|-------|------------------------|
| 250 | 10-Year Street Flow |
| 500 | 100-Year Street Flow |
| (300) | 10-Year Facility Flow |
| (800) | 100-Year Facility Flow |
- (Flows in CFS)




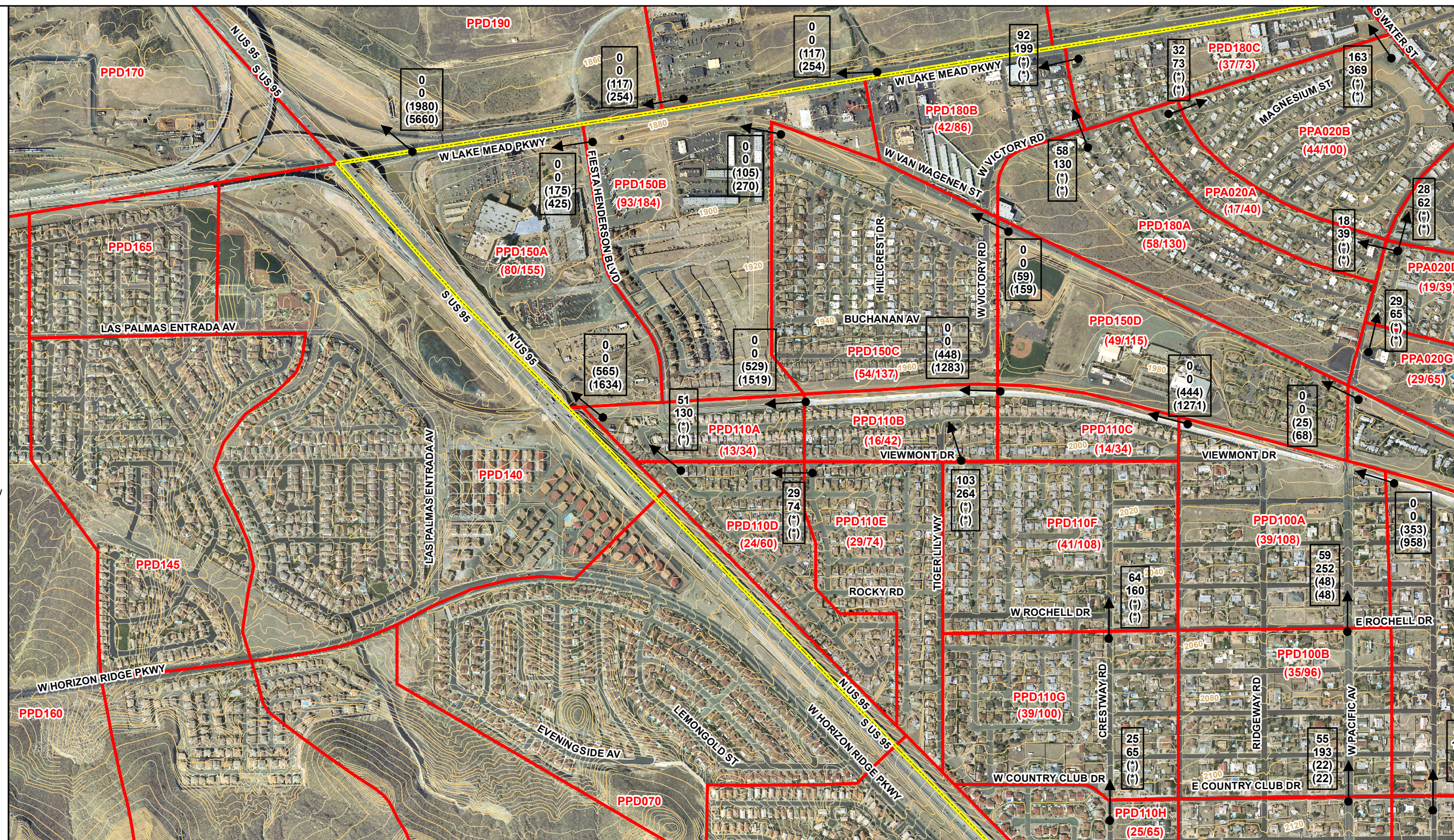
-  Study Area Limit
- 1996 Contours**
-  5-Foot Contours
-  20-Foot Index Contours

PHOTO DATE: SPRING 2006

FIGURE E-7



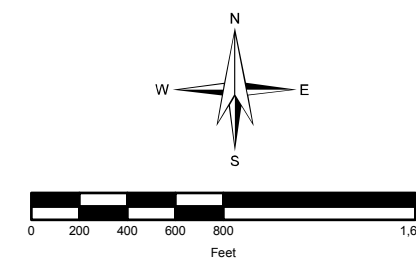
EXISTING DRAINAGE CONDITIONS



2727 S. Rainbow Boulevard
Las Vegas, NV 89146-5148
Phone: (702) 873-7550
Fax: (702) 362-2597
Web Site: <http://www.vtnnv.com>

A map of the study area divided into 15 numbered grid cells. The cells are arranged in a 5x3 grid. Major roads shown include Sunset, Warm Springs, Stephanie Gibson, Harbor, 1215, Alameda, Bucktrack, Horizon, Greenway, and Wilson White. Landmarks include the Harbor, Alameda, and Bucktrack. The grid cells are numbered 1 through 15. Cell 7 is highlighted in yellow. Cells 1, 2, 3, 4, 5, 6, 8, 9, 10, 11, 12, 13, 14, and 15 are white. Cells 1, 2, 3, 4, 5, 6, 8, 9, 10, 11, 12, 13, 14, and 15 are white. Cells 1, 2, 3, 4, 5, 6, 8, 9, 10, 11, 12, 13, 14, and 15 are white. Cells 1, 2, 3, 4, 5, 6, 8, 9, 10, 11, 12, 13, 14, and 15 are white.

NOTE:
Existing drainage conditions are based on future
Curve Number values with only existing local and
CCRFCD facilities in place.



SCALE: 1 inch = 800 feet