

- Facilities
- Funded
- ★

Central Community Park & Fire Station (50 ac.)
- ★

Police Station (7.5 ac.)
- ★

Two, 5-acre neighborhood parks (45 total acres).
Approximate locations shown.
- ★

Seven, 10-acre neighborhood parks (70 total acres).
Approximate locations shown.
- ★

Sports Complex (60 ac.)
- Not Funded
- ★

Detention Basin & Outfall (80 ac.)
- ★

South Fire Station (5 ac.)
- ★

Maintenance Yard & Storage, Water Pump Station & Reservoir (7.5 ac.)
- ★

Sweeper/Dump Facility, Water Pump Station & Reservoir (10 ac.)
- ★

Sloan/Via Inspirada & Via Nobila Interchanges
- ★

Water Pump Station & Reservoir (5 ac. ea.)
- ★

Mountain Park (800 ac.)
- ★

Sloan Canyon Gateway Park (30 ac.)

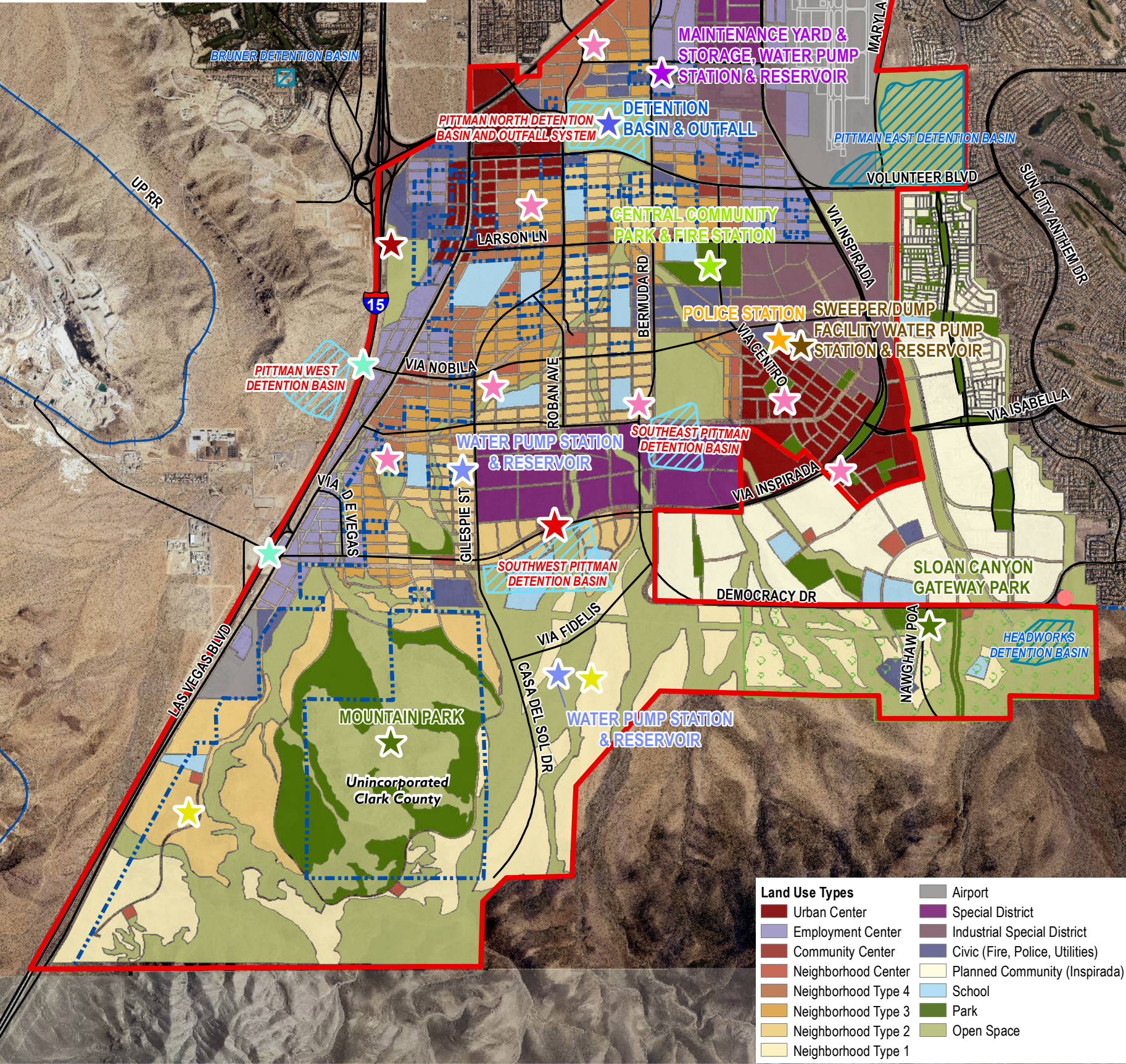


EXHIBIT B

MAP OF FACILITIES

- Fire Stations
- Existing
- Proposed
- Regional Flood Control Detention Basins
- ▨

Existing or Under Construction Facility
- ▨

Proposed Facility
- Parks & Recreation
- ▨

Existing
- ▨

Proposed
- ▨

Sloan Canyon Gateway Park
- City of Henderson Master Streets and Highway Plan
- West Henderson Public Facilities Needs Assessment Area Plan Boundary
- Corporate Limits

Land Use Types	
Urban Center	Airport
Employment Center	Special District
Community Center	Industrial Special District
Neighborhood Center	Civic (Fire, Police, Utilities)
Neighborhood Type 4	Planned Community (Inspirada)
Neighborhood Type 3	School
Neighborhood Type 2	Park
Neighborhood Type 1	Open Space

HENDERSON, NV

MAP CREATED: AUGUST 2016

SOURCE(S): CITY OF HENDERSON COMMUNITY DEVELOPMENT & SERVICES DEPARTMENT, CITY OF HENDERSON FIRE SERVICES, CLARK COUNTY ASSESSOR'S OFFICE, CLARK COUNTY GEOGRAPHIC INFORMATION SYSTEMS MANAGEMENT OFFICE, CLARK COUNTY REGIONAL FLOOD CONTROL DISTRICT.

BASED ON PROJECTED COORDINATE SYSTEM: NAD83, STATEPLANE NV EAST FIPS 2701 FEET

NOTE: THIS MAP IS OFFERED AS A GENERAL REFERENCE GUIDE ONLY. NEITHER WARRANTY OF ACCURACY IS INTENDED NOR SHOULD ANY BE ASSUMED.

CITY OF HENDERSON
240 WATER STREET | P.O. BOX 95050
HENDERSON, NV 89009-5050
(702) 267-2323
WWW.CITYOFHENDERSON.COM